



# Balance

*Behavioral Health Product Overview*

published **March 2023**



# safety

*is our focus*



Safety and serenity should go hand in hand. Intensa's Behavioral Health line is specially made for the comfort and security of the patients who need it most. Caregivers can rest assured knowing that Intensa will provide casework that will help eliminate pinch points, reduce access to assembly points and has no hooks. We use cam lock, steel-on-steel construction for the best security available and offer rounded edges and sloped tops to reduce the risk of ligature and garroting. All of our units are shipped fully assembled which ensures accurate alignment of the cabinets as well as reduced installation costs. Keep your patients safer and comfortable with Balance casework from Intensa.



# Night Stands



BHT 1000

**Desk**

\$689



BHC 1020

**Open Shelf Night Stand**

\$862



BHC 1000

**Single Drawer Shelf/  
Night Stand**

\$892



BHC 1005

**Single Drawer, Door AV  
Cabinet/Night Stand**

\$1100



BHC 1015

**Door AV Cabinet/  
Night Stand**

\$988



BHC 1010

**Three Drawer/  
Night Stand**

\$1187

# architectural *vision*

Intensa's Balance allows today's architects, designers and facility planners to create healing and wellness zones offering an extensive selection of design options. These options promote all aspects of wellness to the patient and families while maximizing all available efficiencies to recovery providers.





# Wardrobes



BHW 1005  
Shelved Wardrobe

\$1884



BHW 1010  
Wardrobe

\$2152



BHW 1000  
Slant Door Wardrobe

\$2451



BHW 1015  
Closed Wardrobe

\$2325

# adaptation

*continuously evolving*

Rapidly changing healthcare and wellness facilities emerging as leaders today face challenges of obsolescence tomorrow. Intensa's Balance is continuously evolving designs to help today's wellness care providers keep pace with today's patient needs and requirements.



# Bed & Headboard



BHB 1000

BHH 1000

**Bed & Headboard†**

Requires 80" x 36" mattress†

BHB 1000	BHH 1000
\$2230	\$321

# sustainable *value*

Intensa's Balance solutions allows for cost reductions through installation ease, design updates, re-configuration of existing product and replacement of damage components. In addition, our re-configurable modularity helps reduce disposal and incineration cost of existing fixed or built-in cabinetry. Balance depreciates in 7 years as compared to 39 years for a fixed or built-in product.





# Finish Options & Features



Drawer glide prevents unauthorized removal  
All doors and shelves are non-removable



Rounded edges for safety  
Cabinets are finished inside and out  
on all four sides for sanitary control



Tamper-proof screws and brackets on all  
exposed connections  
Steel on steel constructed cam locks located in  
non-accessible locations



Brushed recessed safety pulls  
Single Lock Double Lock or  
Gang Locks Available - *details on page 11*



Sloped top for safety and cleaning  
Units are shipped fully assembled which means  
accurate alignment of cabinets is assured and  
may save additional installation cost



Extended hasp for extra security



Full-length hinges for strength  
All units can be provided with pre-drilled holes and  
location strips for bolting to wall and floors

Nailer boards included



Heavy duty edge, bases and surfaces now  
made with TFL (Thermally Fused Laminate)

Contribute to LEED points for materials and resources

ARIA | ARA

BLACK | BLK

CHARLESTON  
OAK | CHO

FOLKSTONE  
GREY | FGY

GANACHE | GAN

ICICLE | ICE

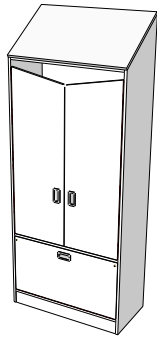
LONDON  
GREY | LGY

# environmental *stewardship*

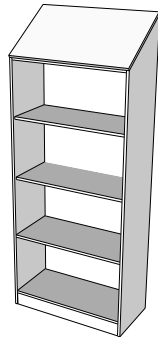
Intensa's Balance supports practical, economical and sustainable manufacturing aligning itself with suppliers who share our vision and commitment to a "green" stewardship toward our environment. Our LEED endorsements promote the reduction of air pollutants, waste, and materials needed, while improving air quality and occupant wellness.



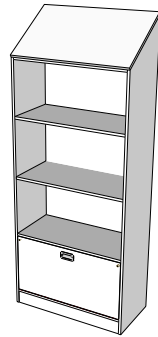
# Finish Options & Specifications



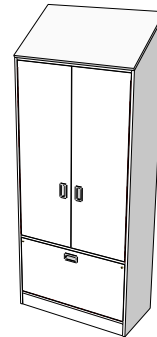
**BHW 1000**  
**Slant Door Wardrobe**  
 weight: 326 lb • 147.87 kg



**BHW 1005**  
**Shelved Wardrobe**  
 weight: 280 lb • 127.01 kg

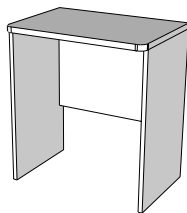


**BHW 1010**  
**Wardrobe**  
 weight: 290 lb • 131.54 kg

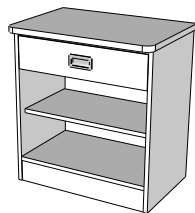


**BHW 1015**  
**Closed Wardrobe**  
 weight: 326 lb • 147.87 kg

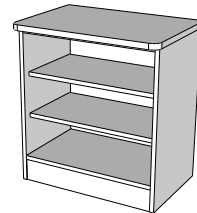
Dimensions w / d / h: 36 / 16 / 90 inch • 91.44 / 40.64 / 228.5 cm



**BHT 1000**  
**Desk**  
 weight: 68 lb • 30.84 kg



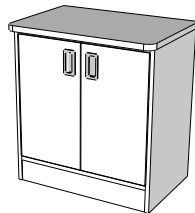
**BHC 1000**  
**Single Drawer Shelf/Night Stand**  
 weight: 128 lb • 58.06 kg



**BHC 1020**  
**Open Shelf Night Stand**  
 weight: 112 lb • 50.80 kg



**BHC 1005**  
**Single Drawer, Door AV Cabinet/  
 Night Stand**  
 weight: 138 lb • 62.60 kg

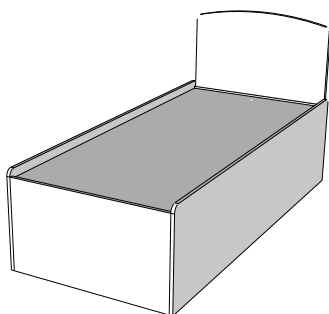


**BHC 1015**  
**Door AV Cabinet/Night Stand**  
 weight: 132 lb • 59.87 kg



**BHC 1010**  
**Three Drawer/Night Stand**  
 weight: 132 lb • 59.87 kg

Dimensions w / d / h: 27 / 18.625 / 29 inch • 68.58 / 47.3075 / 73.66 cm



**BHB 1000**  
**BHH 1000**  
**Bed & Headboard\***  
 Requires 80" x 36" mattress†

Headboard Dimensions w / l / thick: 36 / 42 / 1.25 • 91.44 / 106.68 / 3.175 cm | weight: 37 lb • 16.78 kg  
 Bed Dimensions w / l / h: 37.5 / 82.25 / 22 • 95.25 / 208.915 / 55.88cm | weight: 360 lb • 163.29 kg

## Lock Options

- SL - Single Lock \$70
- DL - Double Lock \$82
- GL - Gang Lock \$402
- CL - Combination Lock \$142

*Digital and Wireless Locks Available*

NORWAY | NWY

SHAKER  
 CHERRY | SHA†

SOLAR  
 OAK | SOK†

TALAS  
 CHERRY | TCY†

WILD  
 CHERRY | WCH

WILLIAMS  
 OAK | WMO

WINDSOR  
 MAHOGANY | WMY†




# hai

## *awareness*

Along with being aesthetically gratifying, Intensa's Balance was designed to be easily cleaned, offering finishes that are durable and will hold up to today's stringent cleaners. All Balance finishes are applicable to today's health care facilities stringent house keeping requirements.



 Terms and Conditions plus Limited Warranty can be found on Intensa.net

 Color variations may occur due to monitor or printer settings.

© 2016, GF Health Products, Inc. All Rights Reserved.

Intensa is a registered trademark of GF Health Products, Inc.

\*Wilson Art is a registered trademark of Wilsomart LLC.

GF Health Products, Inc. is an ISO 13485:2016 / MDSAP Certified Company.

*Manufactured in the USA*

Intensa, Inc. | P.O. Box 5981 | High Point, NC 27262 | USA  
+1 888.636.2660 | [intensa@grahamfield.com](mailto:intensa@grahamfield.com) | [intensa.net](http://intensa.net)

GF1600144RevE23

