



EXAM ROOM SOLUTIONS

Put a little **COLOR** in your exam with Intensa!

As the practice of medicine is being administered in new and unique venues, healthcare buildings are changing. Today's Medical Office Buildings (MOB) are creating more competitive atmospheres to recruit new patients and employees. Uninviting surroundings of old medical facilities built many years ago are being rebuilt at a rapid pace. These new designs have warm and inviting elements welcoming patients with a home-like environment. However, this warmth seems to stop at the waiting rooms. Exam rooms still frequently adopt a one-colorway story that does not reflect today's healthcare trends.

Intensa wants to help change the current environment by *offering one of the largest color stories* for the exam room.

And if your current exam table is in need of an update, we offer replacement options that can be upholstered in a variety of vinyl colors and patterns. Revitalize your room without the expense of new tables!



Intensa is helping to deliver effective patient and caregiver interaction with one difference... WE DO IT IN STYLE.

This décor has all of the elements necessary for a general practice, utilizing a soothing color palette to create an atmosphere of comfort for the patient, staff and physician. The use of pattern on the exam top prevents the look of a sterile, cold table. Incorporating soft taupes and smoky blues into the walls and seating make this room warm and welcoming without overheating. Pulse Casework—shown in a rich wood grain and solid surface top—combines to create an exam room with lasting design quality and comfort. We always keep in mind the harsh environments and usage of exam rooms in our designs and offer an industry-leading warranty to back them up.

i Special Feature

The exam bed is shown in a special sewing technique. The designer wanted to have curves of vanilla cream to move through the contemporary burnt orange cushion to soften the look. Intensa works with all interior designers to achieve every detail in their design, such as this two-tone upholstery. Intensa will make your designs come alive!



Sherwin-Williams Paint
 a. SW 6493 | Ebbtide
 b. SW 7562 | Roman Column

CF Stinson Textiles
 c. 420 Exam Bed | Cirque Sunfire | CRQ 16
 d. 420 Exam Bed | Citadel Alabaster | CIT 31
 e. 951-CB Physician Exam Stool & 251 Arm Chair | Rialto Sunset | RIA 36

Casework Laminate
 f. Pulse Casework | Clark Cherry

Top Surface
 Recommend Solid Surface Top

Products in General Practice Exam Room:
420 Exam Bed with three pass-through drawers, two storage drawers, pull-out step, encompasses five-position continuous lock stirrups, pull-out leg rest with easy access integrated treatment tray and standard Foghorn powdercoat finish; **951-CB Physician Exam Stool** with single lever release, height-adjustable crescent back rest and black composite base; **251 Arm Chair** with wall saver legs; **Pulse Casework** includes mounting system; PWC-361618 Double Door Wall Cabinet with shelf; PWC-36-SLT Sanitary Slope Top for Wall Cabinets; PDF-181618-B Pulse Drawer Base Cabinet with Two 9" Drawers; PSC-181618-KNC Pulse Knee-Clearance Sink Cabinet Base with Removable Front Panel; PWS-SSIBS-36 LG HiMac's Solid Surface Top with Integrated Back Splash; SSIS-1311 Integrated Sink; GNF Faucet Option.



i Special Feature

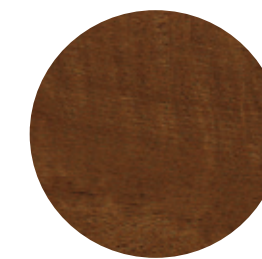
Intensa offers a wide range of features and options for our stools. From basic-and-backless to add-ons like a procedure arm and foot ring, you can customize each stool to your exact needs. And with our extensive range of vinyl finishes, you don't have to settle for basic grey or beige. For a final personalized touch, we even offer custom embossing!

Intensa offers a collection of treatment tables to meet any need in the exam room. The tables are offered with an adjustable back and an optional shelf. Our treatment tables can also come with up to two pass-through drawers. And you can use our extensive collection of vinyls to add color and texture to your exam or procedure room.

The Standard Exam Room can be **UNIQUELY** designed with the modular and reconfigurable *Essentials Casework*.



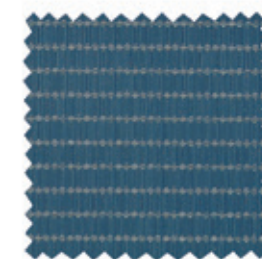
Sherwin-Williams Paint
SW6070 | Heron Plume



Casework Laminate
Essentials Casework | Nina Maple



Top Surface
Recommend HPL Work Surface Wilsonart® Laminate with 3MM Edge Band | Neutral Glace



CF Stinson Textiles
414DD Treatment Table | Ybor River | YBO 13



CF Stinson Textiles
201 Arm Chair | Diva Limelight | DVA 49



CF Stinson Textiles
951 Physician Exam Stool | Script Purple Passion | SCT 36

Products in Standard Exam Room:

414DD Treatment Exam Table with adjustable back, shelf, two drawers and standard Foghorn powdercoat finish; 951 Physician Exam Stool with single lever release and black composite base; 201 Arm Chair with wall saver legs; 120 Instrument Stand with dual post and stainless steel tray; Essentials Casework includes 3618-DDSC Sink Cabinet with Double Doors; E18WS-HPL36 HPL Work Surface with 3MM Edge Band; SSF-1515 Stainless Steel Sink with Gooseneck Faucet; 3614-DDWC Double Door Wall Cabinet with Two Adjustable Shelves; 18-LTT-R Lap Top Computer Tray.



Flexible Exam Rooms need to be just that... FLEXIBLE.

This room utilizes rich, warm wood tones and color blocking—making a statement for any specialty focus. The High/Low Power Table becomes the focal point of the room with its multicolored pattern. The colors woven into the pattern are used on the walls, casework and seating for a rich, sophisticated environment.

Our Pulse Plus Casework is mounted directly to the wall using our unique mounting system. It has an open back area where a rail system may be used to mount dispensers and containers for easy access.

i Special Feature

Our 460 Power Exam Table offers many optional add-ons to help with whatever your practice needs, including extra storage or an instrument warming kit. Our assist arms option gives you the flexibility to have extra support when you need it and not when you don't.



Sherwin-Williams Paint
SW 6219 | Rain



Casework Laminate
Pulse Plus Casework | Wild Cherry



Top Surface
White Solid Surface Top



CF Stinson Textiles
460 Exam Bed | Lava Aurora | LAV 11



CF Stinson Textiles
240 Bariatric Chair | Fizz Champagne | FIZ 24



CF Stinson Textiles
973-CB-FR Physician Exam Stool
Stitch in Time Skipper | SNT 44

Products in Flexible Exam Room:

460 High/Low Power Table with power-assisted back, encompasses five-position continuous lock stirrups, pull-out leg rest with easy access integrated treatment tray, physician storage, foot pedal, pedestal base with electromechanical drive and standard Foghorn powdercoat finish; **973-CB-FR Physician Exam Stool** with chrome D-handle release, polished aluminum base, height-adjustable crescent back rest and foot ring; **240 Bariatric Chair** with wall saver legs; **Pulse Plus Casework** includes mounting system; PPWC-181618 Wall Cabinet with Single Door; PPWC-361618 Wall Cabinet with Double Door; PPSC-181618 Sink Cabinet Base with Removable Front Panel; PPHC-361618 Double Door Base Cabinet and Shelf; PPWDC-181660-R Wardrobe Cabinet with Upper and Lower Shelves, Coat Rod, Mirror and Self-Return Privacy Panel; PPW-SSIBS-54 LG HiMac Solid Surface Top with Back Splash; SSIS-1311 Integrated Sink; GNF Faucet Option.

Cardiology | Endocrinology | Geriatrics | Hematology | Neurology | Oncology

For the physicians who *focus on geriatric or special needs patients*, this exam table offers **EASY ACCESS** and **ADJUSTABLE HEIGHT CAPABILITY**.

Its lowest position is wheelchair height, eliminating the need for staff to lift, reducing the potential for injury to the patient or caregiver. The electromechanical drive provides a smooth, quiet motion to keep the patient calm prior to exam, allowing for a better baseline reading. DC power utilizes less electricity, which makes this unit operate more efficiently. A hand and foot control gives the caregiver their own preferred method for operating the table. Another beneficial feature is the treatment tray, which may be accessed with the foot rest in or out.



Special Feature

As your practices evolves, Pulse Plus casework can be reconfigured to fit into another exam room—a long-term answer to growth and change. Special features can include a wardrobe with an extra privacy panel that extends past the door to create a private dressing area reducing the need for privacy curtains and their cost of upkeep. The interior of the wardrobe has a mirror, hooks, and a separate shelf for shoes and purses allowing your clothing and personal items to remain safe and out of sight. Intensa always adds those features you weren't expecting!



Sherwin-Williams Paint
a. SW 7011 | Natural Choice

CF Stinson Textiles
b. 460 Exam Bed | Casablanca Magenta | CSA 20
c. 251 Arm Chair | Montana Spice | MTA 78
d. 951 Physician Exam Stool | Tessuto Tuscan | TES 16

Casework Laminate
e. Pulse Plus Casework | Clark Cherry

Top Surface
f. White Solid Surface Top

Products in Barrier Free Exam Room:
460 High/Low Power Table with power-assisted back, encompasses five-position continuous lock stirrups, pull-out leg rest with easy access integrated treatment tray, pedestal base with electromechanical drive and standard Foghorn powdercoat finish; **951 Physician Exam Stool** with single lever release and black composite base; **251 Arm Chair** with wall saver legs; **503 Mobile Exam Lamp** with adjustable gooseneck arm; **Pulse Plus Casework** includes mounting system; PPSC-181618 Sink Cabinet Base with Removable Front Panel; PPWF-181618-A Drawer base Cabinet with Three 6" Drawers; PPWDC-181660-R Wardrobe Cabinet with Upper and Lower Shelves, Coat Rod, Mirror and Self-Return Privacy Panel; PPWC-361618 Wall Cabinet with Double Doors; PPBP-1927 Back Panel; PWS-SSIBS-36 LG HiMacs Solid Surface Top with Integrated Back Splash; SSSIS-1311 Integrated Sink; GNF Faucet Option.



Sherwin-Williams Paint
SW 7661 | Reflection



Casework Laminate
Pulse Casework | Temino Oak



Top Surface
Recommend Hi-Macs Classic
Moon Haze | GI 18



CF Stinson Textiles
420 Exam Bed | Vortexis Cabana | VOR 07



CF Stinson Textiles
201 Arm Chair | Rainier Wildflower | RIR 31



CF Stinson Textiles
962 Physician Exam Stool
Apex • Crypton® Revl™ Tranquil | APX 25

Curated specifically for women, *this décor creates an atmosphere of calm* with warm, soothing colors that **will PUT ANYONE AT EASE.**

Taking cues from cozy living rooms and welcoming homes, this environment is designed to be inviting and familiar. Earth tones and natural patterns on both the furniture and walls serve to reinforce this theme, while the Pulse Casework provides ample storage and flexibility for your practice.



i Special Feature

All 420 Series exam tables from Intensa have metal pass-through drawers rather than the typical plastic, so items can be accessed on both sides. The stirrups have a five-position continuous lock, unlike our competitors—who only have three positions. A procedure tray is independent of the leg rest and may be accessed easily at any time. An all-metal construction for the base table provides longevity and recyclability.



Products in Women's Exam Room:
420 Exam Bed with three pass-through drawers, two storage drawers, pull-out step, encompasses five-position continuous lock stirrups, pull-out leg rest with easy access integrated treatment tray and standard Foghorn powdercoat finish; **962 Physician Exam Stool** with single lever release and flat aluminum base with black plastic toe caps; **201 Arm Chair** with wall saver legs; **Pulse Casework** includes mounting system; PSCD-361618 Sink Cabinet Base with Double Door; PHC-181618-L Single Door Base Cabinet with Shelf; PDF-181618-A Drawer Base Cabinet with Three 6" Drawers; PWC-361618 Double Door Wall Cabinet with Shelf (x2); PWS-SSIBS-72 LG HiMacs Solid Surface Top with Integrated Back Splash; SSIS-1311 Integrated Sink; GNF Faucet Option.

Intensa believes that having lab work done should be *experienced* in a **PLEASANT ATMOSPHERE.**



Sherwin-Williams Paint

a. SW 9055 | Billowy Breeze

CF Stinson Textiles

b. 240 Bariatric Chair | Wink with Agion® Amber WIN 13

c. 620LL Bariatric Blood Drawing Chair
Natural World Driftwood | NTL 20

Casework Laminate

d. Essentials Casework | Brazilian Walnut

Top Surface

e. Recommend HPL Work Surface with 3MM Edge Band | Sahara (Not Pictured)

Products in the Phlebotomy/Blood Draw Room:

620LL Blood Drawing Chair with height-adjustable padded flip arms; **120 Instrument Stand** with dual post and stainless steel tray; **240 Bariatric Chair** with wall saver legs; **Essentials**

Casework includes 3618-3BFC Pedestal Cabinet with Three 6" Drawers and One 12" High Drawer; 3614-DDWC Double Door Wall Cabinet with Two Adjustable Shelves; E18WS-HPL36 HPL Work Surface with 3MM Edge Band.

Color is a great way to provide an easy transition between different areas of work space. Here, one colorway is used to lead from the waiting room to the procedure area.

This design draws inspiration from the latest interior design trends, which seek to create inviting human spaces through warm, natural colorways. Instead of moving from reception area to phlebotomy room, your patients will feel more as if they're simply walking from room to room in their own homes.

And with comfortable chairs in beautiful colors and patterns, your patients will feel at home even in the blood draw chair. The lab technician can adjust both arm heights to suit the desired position when taking samples, helping to eliminate stress and back strain from bending during the procedure. This bariatric phlebotomy chair is also available with a double flip arm for patient safety and convenience.



Typical Exam Room Set-Ups



Designs that *streamline and promote* **WELLNESS.**

Evolving healthcare requires medical interiors to be flexible. You need to be able to keep pace with providers' needs alongside medical and diagnostic advancements without sacrificing a positive, healing environment for your patient. With our Essentials, Pulse and Pulse Plus lines, each exam room will offer a wealth of storage options and design features that give your room a personal, human touch. Intensa casework can stretch from floor to ceiling or float in the middle, maximizing your space but remaining infinitely flexible. Our designs also emphasize sustainability in all its forms, from responsibly-sourced green materials to a manufacturing process that guarantees longevity. Changes and growth in the industry lead to tight timelines — with modular casework, you can adjust on a dime!

Essentials

Essentials is a modular system of interchangeable components for today's health care facilities. Configurations are easily assembled, removed, rearranged and refreshed while damaged product can be easily replaced without demolition or incineration which can be extremely costly to the medical practice.



Pulse

Pulse Casework offers the same modularity and functionality of Essentials, but takes it to new heights. Pulse systems are mounted to the wall where they can seem to float above the ground. Your clinical space will feel lighter, letting air into your design.



Pulse plus

Pulse Plus Casework has all the necessary storage options, including drawers, door cabinets, ADA sink access, bar rail access and wardrobe. But this casework collection offers much more than storage — Pulse Plus is both modular and reconfigurable. Let Intensa help you think ahead!



**REVITALIZE
YOUR
EXAM ROOM.**



The market for primary care continues to grow and change. Healthcare costs continue to rise and competition for patient care is growing, so facilities are retrofitting to keep up with these demands. All this expansion then begs the question: "What do we do with our existing equipment?"

One approach to combating cost and competition is to incorporate Intensa's replacement top program for existing exam tables. We can provide tops that meet the original equipment manufacturer's specifications, which is preferable to covering old, possibly unsanitary foam.

Renewing medical office buildings with new tops not only helps the environment by recycling existing equipment, it also reduces the cost for expansion or updates. This replacement program provides a competitive advantage for increased profits. These new tops can also work as a quick answer to JCAHO inspections and may help avoid the fines and restrictions associated with them.



Series RT 100
Replacement Bed Top For Ritter/Midmark® 100



Series RT 104
Replacement Bed Top For Ritter/Midmark® 104



Series RT 404
Replacement Bed Top For Ritter/Midmark® 404



Series RT 405
Replacement Bed Top For Ritter/Midmark® 405



Series RT 204
Replacement Bed Top For Ritter/Midmark® 204



Series RT 304
Replacement Bed Top For Ritter/Midmark® 304



Series RT 223
Replacement Bed Top With Foot Pad



Replacement RT 420 Bed Top For Intensa 420



Series 75L
Replacement Bed Top For Ritter/Midmark® 75L



Series RT 411
Replacement Bed Top For Ritter/Midmark® 411

Intensa offers a wide range of colors and patterns to create a new design environment...
AT A FRACTION OF THE COST FOR NEW EXAM TABLES.

Intensa offers a complete line of furnishings with a *wide range of useful features and benefits* **DESIGNED TO PROVIDE SOLUTIONS FOR ANY SCALE BUDGET REQUIREMENTS.**

Reasons to Choose Intensa:

- Offers unlimited textile selections, providing the healthcare community an outlet to create new exam room environments
- Accepts all preapproved COM for all products
- Is an industry leader with 5-Year Warranty on all exam beds and 10-Year Warranty on all seating
- Has exclusive themed exam table designs for pediatrics
- Offers extensive healthcare seating with multiple options
- Bariatric series including exam tables, blood draw seating, stools and guest seating rated up to 1200 lbs.
- Three casework designs that meet all applications: Essentials, Pulse and Pulse Plus
- Auxiliary equipment to facilitate complete exam rooms
- Exemplary customer service and lead times
- GSA Contract V 797-D-30123 Group 65
- Privately-held, small business



