

Exam Room Accessories



2015 Product and Specification Guide

Exam Room Accessories



medical / laboratory seating, casework & equipment



**Intensa's exam room accessories allows today's physician's to intelligently design and optimize space in a practical manor allowing convenience, comfort and efficiency in the examination room.**

## Table of Contents

1. Table of Contents	Page 2
2. Monitor Arm Systems	Page 3
3. Monitor Arm Components	Page 3
4. Fairfield Rail	Page 4
5. Fairfield Rail Adapters	Page 4
6. Fairfield Rail Stand-Offs	Page 5
7. Baskets and Chart Holders	Page 5
8. Tilt-Out Bin Storage	Page 5
9. Glove Box Holders	Page 6
10. Manometer and Cuff Basket Mounting Kits	Page 6
11. Utility Hook Holders	Page 6
12. Sharps Container Holders	Page 7
13. Ophthalmoscope, Speculum and Thermometer Holders	Page 7
14. Manometer Holder (Universal)	Page 7





## Monitor Arms Systems



910+1019



910+1059

<u>Part #</u>	<u>Description</u>	<u>List Price</u>
910+1019	Clamp Style Monitor Arm with Mount/13" Post with Swivel and Tilt	221
910+1059	Clamp Style with 16" Monitor Arm with Mount/13" Post with Swivel and Tilt	246
910+2019	Grommet Style Monitor Arm with Mount/13" Post with Swivel and Tilt	433
910+2059	Grommet Style with 16" Monitor Arm with Mount/13" Post with Swivel and Tilt	463

## Monitor Arms Components



911+0189



911+2009



910+3005

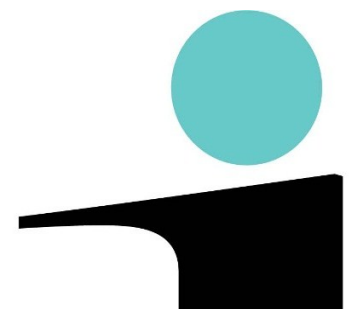


95+9095



964+1019+005

<u>Part #</u>	<u>Description</u>	<u>List Price</u>
911+0189	Wall Rail-13.75"	107
911+0289	Wall Rail-35"	221
911+2009	Adjustable Arm with 16" Reach, 360 Degree Swivel with monitor tilt.	318
910+3005	Adjustable Tablet Quick Mount (see below)	189
795+9095	Quick release Adaptors for Monitors (incudes mount)	42
964+1019+005	Articulating Keyboard Mount	380





## Fairfield Rail System



<u>Part #</u>	<u>Description</u>	<u>List</u>
FRS1002-012	Rail, Heavy Duty, 1Ft	77
FRS1002-024	Rail, Heavy Duty, 2 Ft	101
FRS1002-036	Rail, Heavy Duty, 3 Ft	140
FRS1002-048	Rail, Heavy Duty, 4 Ft	155
FRS1002-060	Rail, Heavy Duty, 5 Ft	203
FRS1002-072	Rail, Heavy Duty, 6 Ft	233

Longer Lengths Available-Contact Intensa

## Fairfield Rail System Adapters



FRS1001-001



FRS1001-002



FRS1001-003



FRS1001-004



FRS1001-007



FRS1001-010



FRS1001-011



FRS1001-012



FRS1001-014



FRS1001-015

<u>Part #</u>	<u>Description</u>	<u>List</u>
FRS1001-001	Adapter, Single, Snap-Action drilled and countersunk (2-vertical holes)	59
FRS1001-002	Adapter, Single, Snap-Action drilled and countersunk (2-horizontal holes)	59
FRS1001-003	Adapter, Single, Snap-Action drilled and tapped (2-vertical holes 10/32)	59
FRS1001-004	Adapter, Single, Snap-Action drilled and tapped (2-horizontal holes 10/32)	59
FRS1001-007	Adapter, Single, Snap-Action drilled and tapped (3-holes 10/32)	49
FRS1001-010	Adapter, Double, Snap-Action drilled and countersunk (2-vertical holes)	84
FRS1001-011	Adapter, Double, Snap-Action drilled and countersunk (4-vertical holes)	84
FRS1001-012	Adapter, Double, Snap-Action drilled and countersunk (2-horizontal holes)	84
FRS1001-014	Adapter, Double, Snap-Action drilled and tapped (4-holes 10/32)	84
FRS1001-015	Adapter, Double, Snap-Action drilled and countersunk (2-Horizontal holes)	72



## Stand Offs for Fairfield Rails



FRS1001-P04



FRS1001-P05



FRS1001-P06

<u>Part #</u>	<u>Description</u>	<u>List</u>
FRS1004-P04	Stand-Off Heavy Duty Rail for Metal Studs or Backer	46
FRS1004-P05	Stand-Off Heavy Duty Rail for Drywall	46
FRS1004-P06	Stand-Off Heavy Duty Rail for Masonry	46

## Baskets and Charts Holders



FRS1001-001



FRS1001-002



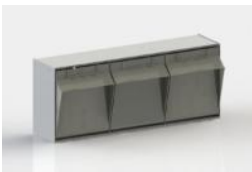
FRS1001-003



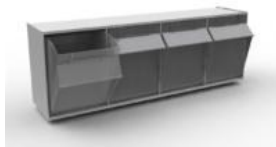
FRS1001-001

<u>Part #</u>	<u>Description</u>	<u>List</u>
FRS1011-001	Basket Utility	274
FRS1011-002	Basket Utility, Fixed 10" w x 6" d x 4' h	240
FRS1011-003	Basket Utility, Fixed 18" w x 9" d x 4' h with three dividers	355
FRS1013-001	Chart Holder	404

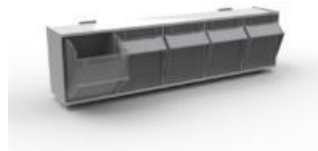
## Tilt-Out Bin Storage



FRS1011-100



FRS1011-101



FRS1011-102



FRS1011-103

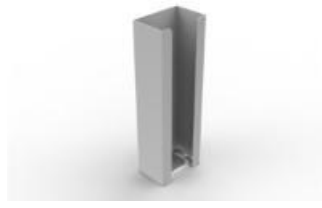
<u>Part #</u>	<u>Description</u>	<u>List</u>
FRS1011-100	Tilt-Out Bin Storage 3-Bin rail mounted	364
FRS1011-101	Tilt-Out Bin Storage 4-Bin rail mounted	345
FRS1011-102	Tilt-Out Bin Storage 5-Bin rail mounted	292
FRS1011-103	Tilt-Out Bin Storage 6-Bin rail mounted	238



## Glove Box Holders



FRS1013-002



FRS1013-003



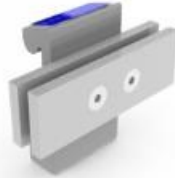
FRS1013-34

<u>Part #</u>	<u>Description</u>	<u>List</u>
FRS1013-002	Glove Box Holder-1 Box (includes mounting adapter)	377
FRS1013-003	Glove Box Holder-2 Box (includes mounting adapter)	440
FRS1013-034	Glove Box Holder-3 Box Adjustable Position (includes mounting adapter)	700

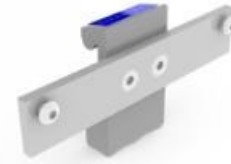
## Manometer and Cuff Basket Mounting Kits



FRS1012-P02



FRS1012-P04



FRS1012-P05

<u>Part #</u>	<u>Description</u>	<u>List</u>
FRS1012-P02	Mounting Kit for Welch Allyn, Tyco-Aneroid Manometer Model 509	157
FRS1012-P04	Mounting Kit for Cuff Basket	127
FRS1012-P05	Mounting Kit for Welch Allyn, Tyco-Aneroid Manometer Model 767	157

## Utility Hook Holder



FRS1013-013



FRS1013-014

<u>Part #</u>	<u>Description</u>	<u>List</u>
FRS1013-013	Utility Hook Holder-1 Hook	157
FRS1013-014	Utility Hook Holder-3 Hook	328



## Sharps Container Holders



FRS1013-009



FRS1013-039



FRS1013-040



FRS1013-041

<u>Part #</u>	<u>Description</u>	<u>List</u>
FRS1013-009	Universal Sharps Container Holder	308
FRS1013-039	Large Kendall Sharps Container Holder Set of 2	266
FRS1013-040	Daniels Sharpsmart Holder	270
FRS1013-041	Standard Kendall Sharps Holder	147

## Ophthalmoscope, Speculum and Thermometer Holders



FRS1013-010



FRS1013-011



FRS1013-012



FRS1013-045

<u>Part #</u>	<u>Description</u>	<u>List</u>
FRS1013-010	Ophthalmoscope Holder-Welch Allyn 747	254
FRS1013-011	Ophthalmoscope Holder-Welch Allyn 767	254
FRS1013-012	Speculum Container Holder-Welch Allyn	186
FRS1013-045	Thermometer Holder-Welch Allyn	254

## Manometer Holder Universal



FRS1013-016

<u>Part #</u>	<u>Description</u>	<u>List</u>
FRS1013-016	Universal Manometer Holder	377

Intensa, Inc.  
PO Box 5981, High Point, NC 27262 888.636.2660  
[www.intensa.net](http://www.intensa.net)