

2016 Product and Specification Guide Modular Cabinetry and Case Work

A Better Healing Environment



Table of Contents

1. Table of Contents	Page 2
2. Introduction to Pulse and Typical Installations	Page 3-5
3. Features and Benefits	Page 6-7
4. LEED Credits	Page 8
5. Environmentals	Page 8
6. Warranty	Page 9
7. Terms and Conditions	Page 10
8. Materials and Finishes	Page 11
10. Wall Cabinets	Page 12
11. Sanitary Slope Tops for Wall Cabinets	Page 12
12. Glove Box Cut Outs	Page 12
13. Base Cabinets/Drawer Base Cabinets	Page 13-14
14. Sink Cabinets	Page 15
15. ADA Sink Cabinets	Page 15-16
16. Cut-Outs and Faucet Options	Page 16
18. Wardrobe Cabinets	Page 17
19. Storage Cabinets	Page 17
20. Wall Mount Lap Top Station	Page 18
21. Solid Surface Options	Page 18
22. Lock Options	Page 18
23. Pulse Case Work Finishes	Page 19

Installation Instructions Available From Intensa

Evolving healthcare requires medical interiors to be flexible keeping pace with providers needs along with medical and diagnostic advancements. Healthcare facilities should enable these ongoing advances along with providing the patient with an environment that promotes positive healing outcomes. Pulse modular cabinetry is the ideal design to support today's healthcare interiors.

Modular Cabinetry and Case Work





A Better Healing Environment

Reconfigurable Modularity

HAI Awareness

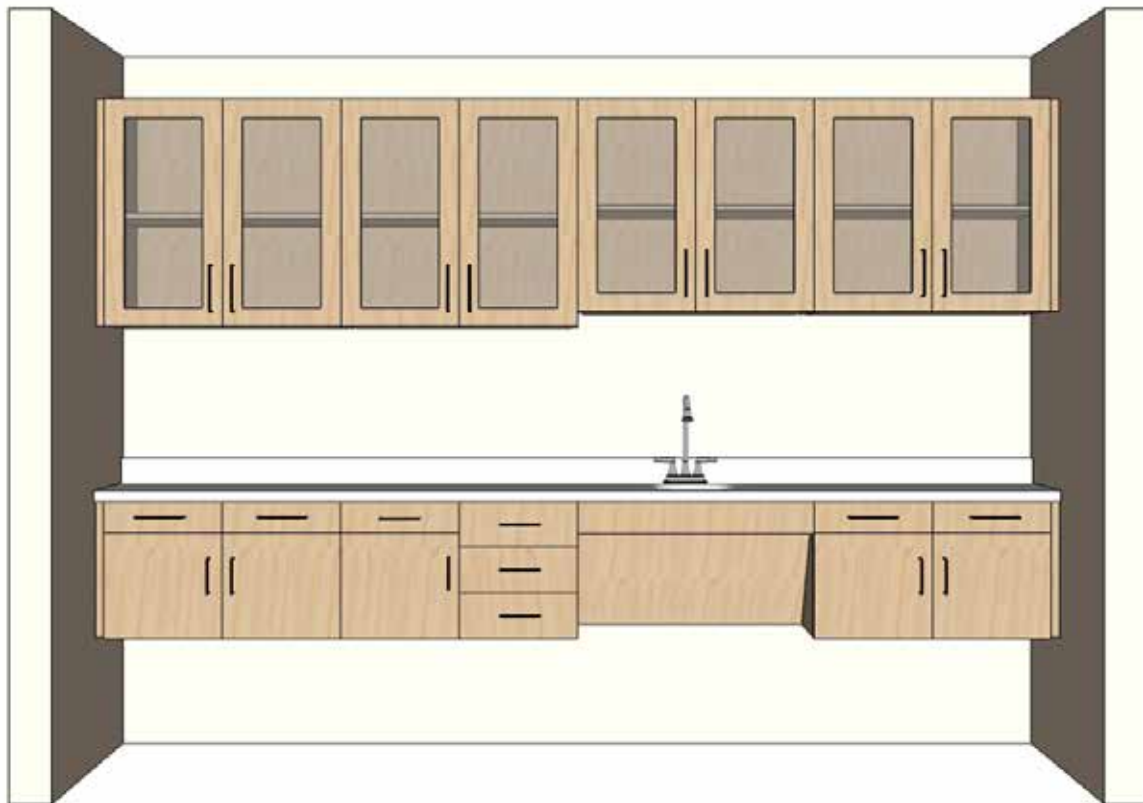
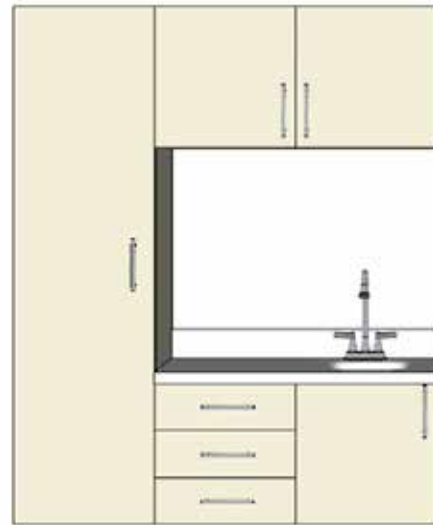
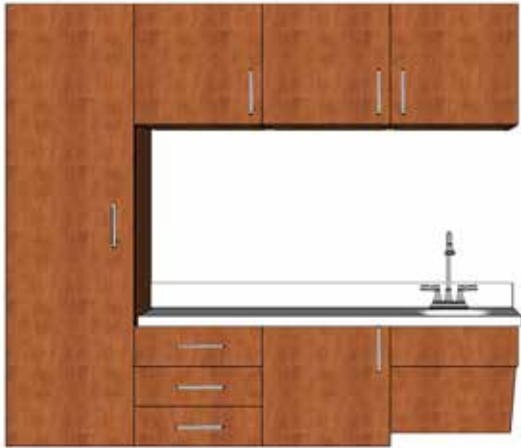
Environmental

Architectural Vision

Adaptation

Sustainable Value

Typical Exam Room Set-Ups



Features and Benefits

Reconfigurable Modularity

Pulse is a modular system of interchangeable components for today's health care facilities. Configurations for patient rooms, exam rooms, caregiver work areas, and other clinacal spaces are easily assembled, removed, rearranged and refreshed while damaged product can be easily replaced without demolition or incineration which can be extremely costly to the medical practice.

HAI Awareness

Along with being aesthetically gratifying, Pulse was designed to be easily cleaned, offering finishes that are durable and will hold up to today's stringent cleaner. All Pulse finishes are applicable to today's health care facilities stringent house keeping requirements. Most importantly, cabinetry clearance off the floor provides accessible cleaning without damage to the cabinetry.

Environmental

Pulse supports practical, economical and sustainable manufacturing aligning itself with suppliers who share our vision and commitment to a "green" stewardship toward our environment. Our Leed edorsements promote the reduction of air pollutants, waste, and materials needed, while improving air quality and occupant wellness.

Architectural Visions

Pulse allows today's achitects, designers and facilty planners to create healing and willness zones offering an extensive selection of design options. These options promote all aspects of wellness to the patient and families while maximizing all available effeciencies to health care providers.

Adaptation

Rapidly changing health care facilities emerging as leaders today face challenges of obsolescence tomorrow. Pulse's continuously evolving designs and modularity help today's health care providers keep pace with today's patient needs and requirements. Minimize your facilities adaptation expenses using Pulse.

Sustainable Value

Pulse's flexible solutions allows for cost reductions through installation ease, design updates, re-configuration of existing product and replacement of damage components. In addition, our re-configurable modularity helps reduce disposal and incineration cost of existing fixed or built-in cabinetry. Pulse depreciates in 7 years as compared to 39 years for a fixed or built-in product.

A Better Healing Environment



Features and Benefits

- Intensa, Inc. reconfigurable modular caseworks can be depreciated in 7 years vs. the 39 year depreciation of built in cabinets. Consult tax advisor on specific applications.
- Intensa, Inc. has a 5 year Limited Warranty. See full details of the Limited Warranty. Most competitors or built-in products do not carry a full 5 year warranty.
- Intensa, Inc. caseworks can be reconfigured and moved at any future time to better accommodate the work that is being accomplished. Built in cabinets cannot be moved or cannot be moved as quickly and easily.
- Intensa, Inc. uses cam lock, steel on steel construction and all units are shipped fully assembled which means true and accurate alignment of cabinets is assured. They are not shipped in pieces and parts that may mean that parts do not align properly and additional cost to the installers.
- Standard Work Surfaces is Solid Surface (SS) with integrated back splash.
- All cabinets are finished on the inside and the outside. The inside of cabinets looks the same as the outside and gives a finished look as well as prevents any absorption by the substrate. All cabinets are designed with white backs for enhanced vision.
- All cabinets, both base and wall units, are finished on all four sides for sanitary control.
- All door and drawer edges are wrapped in durable and seamless RTF. Back edges of the base and wall cabinets are finished to avoid absorption of water or other matter.
- Intensa, Inc. uses decorative thermally fused laminate on case sides, backs and supporting panels which meets the testing requirements of BIFMA/ANSI laminate requirements.
- Wall hanging hardware is easily adjustable in the field for proper working of the cabinets and is hidden from view after adjustment by protective cover.
- Hinges are Blume 110 degree hinges are easily adjustable in the field with a simple Phillips screwdriver for proper alignment at the time of initial installation and later on if units are changed in position.
- Intensa, Inc. can provide drawings 2D & 3D plus a quotation at no charge. Customer will need to submit cad or dimensional drawings.
- Casework is also Urea Formaldehyde free, meeting more stringent specifications than ANSI A208.1-199 and ANSI A208.2-2002 standards.
- Can contribute to LEED points for materials and resources 4.1, 4.2, 5.1, and 5.2 due to our use of 100% recycled wood fiber. We can also contribute to LEED points for materials and resources.

Environmental Commitments and LEED Credits

<u>LEED Category</u>	<u>Objective</u>	<u>Requirements</u>	<u>Potential Point</u>	<u>Intensa Compliance</u>
Indoor Environmental Quality (IEQ)	Improve air quality and occupant wellness.	Product with no added Urea Formaldehyde (UF)		Panels with zero added UF Powder Paint with zero VOC Polystyrene with zero PVC Germ & allergy killing surface
	Eliminate and reduce indoor pollutants or harmful	Hazardous Air Pollutants (HAP) Volatile Organic Compounds (VOC) Low emitting materials Pollutant Control	1-5 1	
Material and Resource (MR)	Reduce environmental impact, waste, and material's needed Source locally	MR 4.1-10% recycle content MR 4.2-20% recycle content MR 5.2-source within 500 miles.	1 1 1	100% recycled cores High cycle content for plastics and steel. Natural surfacing material Local southeast US manufacturing "Green" Facility
Innovation and Design (CI)	Environmentally practical strategies and behaviors.	Improved sustainable building strategies and knowledge.	1-4	Eliminate millwork obsolescence, replacement Impacts and cost. Modular Design for easy reuse and maximum service to life.
Innovation in Upgrades, Operations and Maintenance	Expand LEED and sustainable building practices & knowledge.	Exceed required LEED performance levels and innovate.	1-4	Self-sanitizing, low maintenance surfaces. Reconfigure to upgrade with minimal cost and zero environmental impact.

Case Work Limited Warrantanty

Intensa warrants its products, to the original owner, to the extent of the purchase price, to be free from defects in material and workmanship for a period of 5 years from the date of the original shipment, if the products are properly installed, maintained, serviced and used under normal conditions. Products are not warranted against the effects of normal wear and tear, misuse, negligence, or accident. Warranty is void with respect to any product which has been modified after initial installation. Standard products are not warranted against damage caused by exposure to heat or moisture. Products are not warranted against problems or damage caused by the failure of walls to support the weight imposed by the attachment of cabinets. Products are not warranted against the effects of overloading cabinets and/or shelves.

The obligation under this warranty of Intensa, Inc. is limited to repairing without charge, or replacing, all products which Intensa is satisfied were defective when originally shipped. Claims under this warranty are to be reported in writing with supporting digital photograph as soon as the problem is known. Claims for shortages or damage present on delivery shall be made within 15 days of delivery. Claims for shipping damage are not covered by this warranty, and shall be presented to the carrier as soon as possible after delivery.

Intensa, Inc. cannot file a freight claim on behalf of its customers.

This warranty is exclusive and in lieu of all other warranties and remedies whatsoever, including but not limited to implied warranties. Intensa, Inc. shall have no liability whatsoever for damages caused by transportation, accidents, fire, unauthorized alteration, or abnormal wear or abuse, nor shall Intensa, Inc. have any liability whatsoever for any incidental or consequential damages. This includes without limitation, lost profits or as such damages arising from the design, manufacture sale, delivery, installation, repair, operation or use of any products of Intensa, Inc. or any actual/alleged failure or defect in products of Intensa, Inc.

*****Casework Warning*****

Intensa does not provide fasteners for wall hanging applications. Installers are responsible for furnishing and installing sufficient numbers of the correct fasteners for the field conditions encountered. Installer should always attach wall hanger device into a structural member, or into a heavy duty toggle mechanism, as appropriate for the wall construction and the anticipated load requirements.

Installers are responsible for furnishing and installing adequate fasteners for field conditions encountered.

Terms and Conditions

Payment Terms: Regular terms are Net 30 days (date of invoice). All invoices are dated the day of shipment. A late payment charge of 1 1/2 % per month, 18% per annum, on past due accounts or the highest amount permitted by law will be assessed. To open an account the names and addresses of five trades references, your company bank and resale number will be required. If an account has not been established, orders will be handled on a Proforma, COD or credit card basis. Intensa, Inc. accepts MasterCard, Visa, AMX and Discover for payment.

Intensa will additionally add a 2% fee for any payments made after the 10th billing day of invoice for credit card payments.

Intensa, Inc. reserves the right to assign invoices to a factoring company.

Freight Policy: All freight charges are prepaid and allowed unless noted. Prices are determined by zone location to which is shipped. All shipments are F.O.B. High Point, NC, unless specified. (Title of goods transfers to purchaser when shipment leaves our dock). All orders will be shipped via best carrier available at time of shipment. Upgrade shipments are available, contact customer service for additional shipping charges.

Additional Delivery Charges:

Residential Delivery Charges-	Amount billed by carrier.
Address Correction-	Amount billed by carrier.
Definite Delivery Charges for Freight-	Amount billed by carrier.
Secured Area Delivers-	Amount billed by carrier.

Freight Claims: All shipments should be carefully inspected for damage upon receipt. Any carton damage should be noted on the freight bill or delivery receipt. **Concealed damage requires immediate inspection by carrier within 15 days from receipt of goods. Intensa, Inc. cannot file a freight claim on behalf of its customers.**

Returning Merchandise: Arrangements must be made in writing prior to the return of any merchandise. Please call customer service at (336)-884-4096 for further information. Unauthorized returns will not be accepted and Intensa, Inc. will not be responsible for any resulting charges incurred. **Only new product in the original carton may be returned per the following restocking charges. Replacement Exam Bed Tops are custom made and not returnable for credit.**

Return Policy

Return with reorder.
 Merchandise less than six months.
 Merchandise greater than six months, less than one year.
 Goods greater than one year.
 Merchandised returned that is unsuitable for resale.

Credit

75% Plus shipping charges.
 65% Plus shipping charges.
 50% Plus shipping charges.
 No credit allowed.
 No credit allowed.

Intensa, Inc. error in processing can be returned at no charge.

Ordering Information: All orders for product must be submitted on a purchase order via fax or email. No verbal orders will be taken unless order is prepaid. Payment can be made with company check or credit card (MasterCard, Visa, AMX and Discover). Contact customer service for more details concerning prepaids. The following information is required on all purchase orders.

Quantity of each model, Model Number, Upholstery Pattern/Color/Laminate and Selection of Options

Caseworks Cancellation-Orders cancelled prior to the start of production are subject to expenses incurred in processing order. No cancellations will be accepted after the start of production.

Responsibility for Installation-Installation is the responsibility of the purchaser and/or the installer selected by the purchaser. Intensa is not responsible or liable for damage or injury caused by improper installation, including but not limited to the failure of installers to provide adequate fasteners and other support for the load imposed by the weight of cabinets and their contents.

Intensa, Inc. is dedicated to providing you and your customer with high quality products. In doing so, we reserve the right to improve, discontinue or modify designs with new materials and or manufacturing techniques without prior written notice.

Intensa, Inc.

Standard Materials and Finishes for Case Work

Thermally Fused Laminate Finish (TFL) and Rigid Thermafoil Finishes (RTF) for Cabinet Finishes

<u>Solids</u>	<u>Wood Grains</u>		
White	Tenino Oak	Clark Cherry	Wild Cherry
Almond	Maple	Drake	Mahogany
Folkstone Gray	Nina Maple	Brazilian Walnut	Tenino Gray
Black	Pinta Maple		

Solid Surface Top Finishes

LG HiMac's Solid Surface Finishes-Level 1

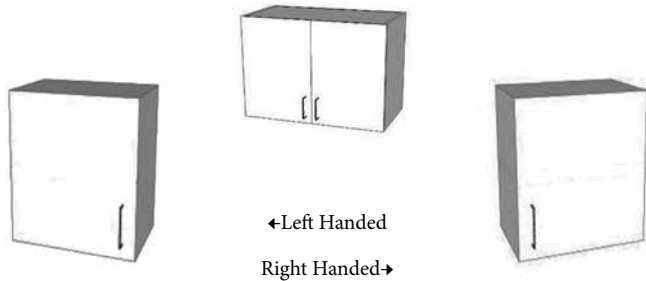
Nordic White	Opal White	Artic White
Alpine White	Ivory White	

Solid Surface Sink-White

Level 2 and 3 Solid Surface Colors Available at an Up-Charge.



Wall Cabinets



Wall Case made with TFL (Thermally Fused Laminate)

Seamless Cabinet Doors are RTF (Rigid Thermofoil)

One Adjustable Shelf

Blum Hinges

Standard Pulls-"T" Style Handle

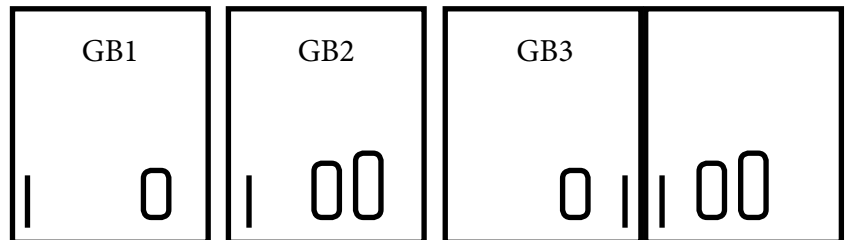
Single Lock or Double Lock Available

<u>Item</u>	<u>List</u>	<u>Width</u>	<u>Depth</u>	<u>Height</u>	<u>Cabinet Weight</u>
PWC181618	532.00	18	16	18	30 lbs.
PWC241618	579.00	24	16	18	35 lbs.
PWC301618	650.00	30	16	18	40 lbs.
PWC361618	706.00	36	16	18	45 lbs.

Please Specify Left or Right by Denoting "L" or "R" at the end of the item number

Glove Box Cut-Outs with Glove Bins for Wall Cabinets

<u>Item</u>	<u>List</u>
GB1	104.00
GB2	123.00
GB3	178.00



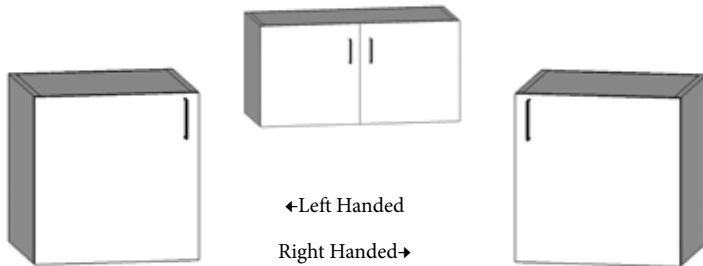
Please Specify: Small-S (3"x 4"), Medium-M (3"x 5") or Large-L (3"x 6") for Hole Size to Match Glove Size

Sanitary Slope Top for Wall Cabinets



<u>Item</u>	<u>List</u>	<u>Width</u>	<u>Depth</u>	<u>Height</u>	<u>Cabinet Weight</u>
PWC18SLT	154.00	18	16	18	10 lbs.
PWC24SLT	178.00	24	16	18	14 lbs.
PWC30SLT	210.00	30	16	18	20 lbs.
PWC36SLT	250.00	36	16	18	24 lbs.

Base Cabinets



Wall Case made with TFL (Thermally Fused Laminate)

Seamless Cabinet Doors are RTF (Rigid Thermofoil)

One Adjustable Shelf

Blum Hinges

Standard Pulls-”T” Style Handle

Single Lock or Double Lock Available

<u>Item</u>	<u>List</u>	<u>Width</u>	<u>Depth</u>	<u>Height</u>	<u>Cabinet Weight</u>
PHC181618	532.00	18	16	18	30 lbs.
PHC241618	579.00	24	16	18	35 lbs.
PHC301618	650.00	30	16	18	40 lbs.
PHC361618	706.00	36	16	18	45 lbs.

Please Specify Left or Right by Denoting “L” or “R” at the end of the item number

Three Drawer Base Cabinet



Wall Case made with TFL (Thermally Fused Laminate)

Seamless Cabinet Doors are RTF (Rigid Thermofoil)

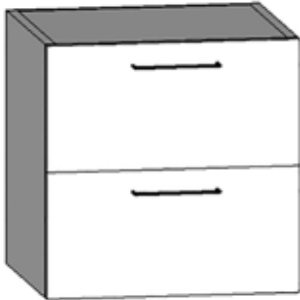
Three 6” Drawers

Standard Pulls-”T” Style Handle

Single Lock or Gang Lock Available

<u>Item</u>	<u>List</u>	<u>Width</u>	<u>Depth</u>	<u>Height</u>	<u>Cabinet Weight</u>
PDF181618A	738.00	18	16	18	35 lbs.
PDF241618A	809.00	24	16	18	40 lbs.
PDF301618A	878.00	30	16	18	45 lbs.

Two Drawer Base Cabinet



Wall Case made with TFL (Thermally Fused Laminate)

Seamless Cabinet Doors are RTF (Rigid Thermofoil)

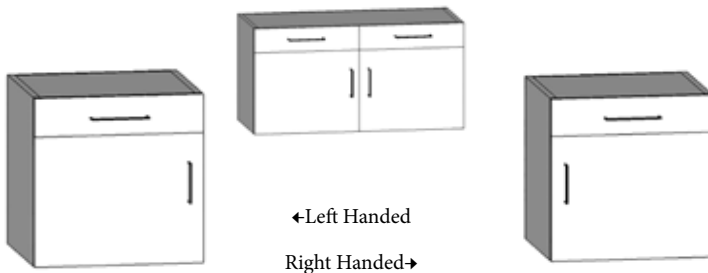
Two 9" Drawers

Standard Pulls-"T" Style Handle

Single Lock or Gang Lock Available

<u>Item</u>	<u>List</u>	<u>Width</u>	<u>Depth</u>	<u>Height</u>	<u>Cabinet Weight</u>
PDF181618B	716.00	18	16	18	33 lbs.
PDF241618B	791.00	24	16	18	38 lbs.
PDF301618B	869.00	30	16	18	43 lbs.

Drawer/Door Base Cabinets



Wall Case made with TFL (Thermally Fused Laminate)

Seamless Cabinet Doors are RTF (Rigid Thermofoil)

One Adjustable Shelf

Blum Hinges

Standard Pulls-"T" Style Handle

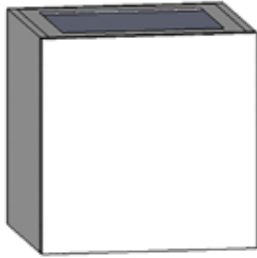
Single 6" Drawer

Single Lock or Double Lock Available

<u>Item</u>	<u>List</u>	<u>Width</u>	<u>Depth</u>	<u>Height</u>	<u>Cabinet Weight</u>
PDB181618	648.00	18	16	18	30 lbs.
PDB241618	713.00	24	16	18	35 lbs.
PDB301618	791.00	30	16	18	40 lbs.
PDB361618	857.00	36	16	18	45 lbs.

Please Specify Left or Right by Denoting "L" or "R" at the end of the item number

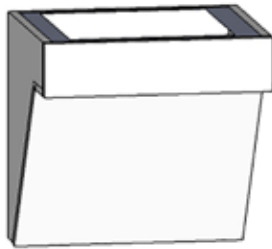
Sink Base Cabinets



Sink Base made with TFL (Thermally Fused Laminate)
 Removable Seamless Front Panel with RTF (Rigid Thermofoil)

<u>Item</u>	<u>List</u>	<u>Width</u>	<u>Depth</u>	<u>Height</u>	<u>Cabinet Weight</u>
PSC181618	525.00	18	16	18	30 lbs.
PSC241618	575.00	24	16	18	35 lbs.
PSC301618	641.00	30	16	18	40 lbs.
PSC361618	678.00	36	16	18	45 lbs.

Knee Clearance/ADA Sink Base Cabinets



Sink Base made with TFL (Thermally Fused Laminate)
 Removable Seamless Front Panel RTF (Rigid Thermofoil)
 Will Require ADA Sink Drain and Trap (Not Provided)
 Please Confirm all ADA Compliances to your Local Code

<u>Item</u>	<u>List</u>	<u>Width</u>	<u>Depth</u>	<u>Height</u>	<u>Cabinet Weight</u>
PSC181618KNC	603.00	18	16	18	50 lbs.
PSC241618KNC	656.00	24	16	18	55 lbs.
PSC301618KNC	709.00	30	16	18	60 lbs.
PSC361618ADA	793.00	36	16	18	65 lbs.

Sink Base Cabinets with Door Access



Wall Case made with TFL (Thermally Fused Laminate)

Seamless Cabinet Doors are RTF (Rigid Thermofoil)

One Adjustable Shelf

Blum Hinges

Standard Pulls-"T" Style Handle

Single 6" Drawer

Single Lock or Double Lock Available

<u>Item</u>	<u>List</u>	<u>Width</u>	<u>Depth</u>	<u>Height</u>	<u>Cabinet Weight</u>
PSCD181618	532.00	18	16	18	30 lbs.
PSCD241618	579.00	24	16	18	35 lbs.
PSCD301618	650.00	30	16	18	40 lbs.
PSCD361618	706.00	36	16	18	45 lbs.

Please Specify Left or Right by Denoting "L" or "R" at the end of the item number

Faucet Options



GNF-Goose Neck Faucet



HSF-Hand Sensor Faucet

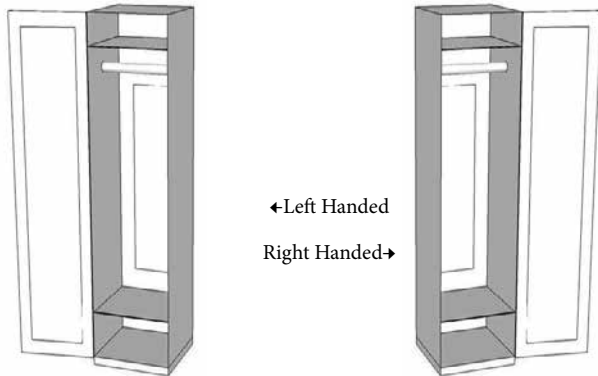
<u>Item</u>	<u>List</u>
GNF	231.00
HSF	1397.00

Solid Surface Cut-Outs

<u>Item</u>	<u>List</u>
2-CO (2")	54.00
4-CO (4")	54.00
6-TRCO (6")	54.00

No Grommets Required for Solid Surface

Wardrobe Cabinet

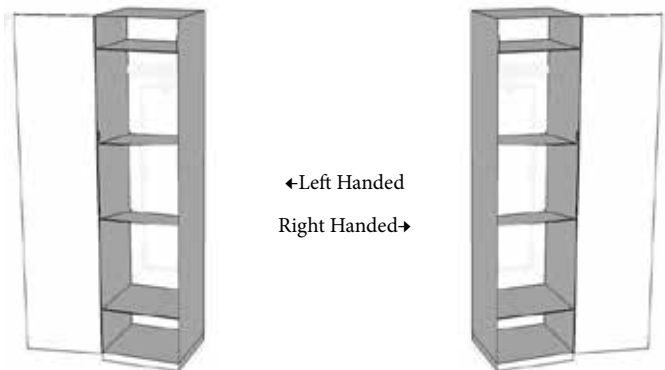


Wall Case made with TFL (Thermally Fused Laminate)
 Seamless Cabinet Doors are RTF (Rigid Thermofoil)
 Two Shelves
 Blum Hinges
 Standard Pulls-"T" Style Handle
 Coat Hanger Hooks
 Mirror 48" x 16"
 Soft Closing Modesty Panel (11" Panel Extension)
 Single Lock/Combination or Digital Locks

<u>Item</u>	<u>List</u>	<u>Width</u>	<u>Depth</u>	<u>Height</u>	<u>Cabinet Weight</u>
PWDC181660	1428.00	18	16	60	130 lbs.

Please Specify Left or Right by Denoting "L" or "R" at the end of the item number

Storage Cabinet



Wall Case made with TFL (Thermally Fused Laminate)
 Seamless Cabinet Doors are RTF (Rigid Thermofoil)
 Two Fixed Shelves/2 Adjustable Shelves
 Blum Hinges
 Standard Pulls-"T" Style Handle
 Single Lock/Combination or Digital Locks

<u>Item</u>	<u>List</u>	<u>Width</u>	<u>Depth</u>	<u>Height</u>	<u>Cabinet Weight</u>
PTSC181660	1094.00	18	16	60	135 lbs.

Please Specify Left or Right by Denoting "L" or "R" at the end of the item number

Wall Mount Lap Top Station



Wall Case made with TFL (Thermally Fused Laminate)

Seamless Cabinet Doors are RTF (Rigid Thermofoil)

Single Lock Available

Available with Internal Locking Pharmaceutical Insert-(LPC)

<u>Item</u>	<u>List</u>	<u>Width</u>	<u>Depth</u>	<u>Height</u>	<u>Cabinet Weight</u>
PWMLTS	913.00	20	3	20	50 lbs.
PWMLTS-LPC	985.00	20	3	20	55 lbs.

LG HiMac Solid Surface Top with Integrated Back Splash

Level 1 Solid Surface

<u>Item</u>	<u>List</u>	<u>Width</u>	<u>Depth</u>	<u>Height</u>	<u>Panel Weight</u>
PWSSSIBS24	596.00	24	16.50	1.5	20 lbs.
PWSSSIBS30	745.00	30	16.50	1.5	25 lbs.
PWSSSIBS36	894.00	36	16.50	1.5	30 lbs.
PWSSSIBS42	1043.00	42	16.50	1.5	35 lbs.
PWSSSIBS48	1192.00	48	16.50	1.5	40 lbs.
PWSSSIBS54	1341.00	54	16.50	1.5	45 lbs.
PWSSSIBS60	1489.00	60	16.50	1.5	50 lbs.
PWSSSIBS66	1638.00	66	16.50	1.5	55 lbs.
PWSSSIBS72	1787.00	72	16.50	1.5	60 lbs.

Solid Surface Side Splash-Item # SS16SS-\$80.00 each

Solid Surface Integrated Sink-Item # SSIS1311-\$1072

Lock Options

<u>Item</u>	<u>List</u>
SL-Single Lock	70.00
DL-Double Lock	82.00
GL-Gang Lock	402.00
CL-Combination Lock	142.00
Digital and Wireless Locks Available	

Intensa Casework RTF and TFL Finishes



White



Almond



Tenino Oak



Maple



Nina Maple



Folkstone Gray



Pinta Maple



Clark Cherry



Drake



Brazilian Walnut



Wild Cherry



Mahogany



Tenino Gray

These Colors are Digital Reproductions and May Vary

Intensa Casework Solid Surface Level 1

Nordic White

Opal White

Artic White

Alpine White

Ivory White

Solid Surface Integrated Sink-White Only

Level 2 and Level 3

Intensa Casework Solid Surface Integrated Sink

Solid Surface Integrated Sink-White Only

Standard Size-13”L x 11” W x 9”D

Faucet Not Included with Sink

Intensa, Inc.
PO Box 5981
High Point, NC 27262
P-888-636-2660 F-336-884-4007
www.intensa.net