

# Approved Vinyl Upholstery Selections



## Industry Standard Colors Collection

Intensa® Standard Vinyl TIER 1

AL ALABASTER	AQ AQUA GREEN	AR ARTICHOKE	BL BLACK
BU BLUE	BT BRITISH TAN	DO DOE	DB DUSTY BLUE
GR GRAY	MO MOSS	NA NAVY	NO NORTHWOODS
OG OCEAN GREY	PM PALM	PL PEARL	PU PLUM
ST SADDLE TAN	SH SHADOW	WH SUPER WHITE	TL TEA LEAF
TE TEAL	VI VIOLET	WG WARM GRAY	WW WEDGEWOOD

Tier 1 Vinyl colors (above) sold by the yard:  
\$60 per yard, 1 yard minimum, plus freight

swatches are digital reproductions. perceived texture and coloring may vary on finished product  
monitor settings effect appearance. order physical swatches using chart links on page 8

published **March 2026**

page 1



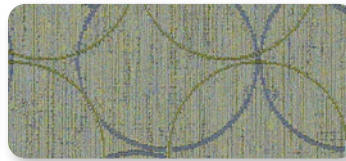
Olympus TIER 6



OLY204 DUNE



OLY202 CORIANDER



OLY213 LAUREL



OLY210 ADMIRAL



OLY01 MELON



OLY09 FERN



OLY208 SHOYA

Natural World TIER 6



NTL221 TIMBER



NTL223 MARIGOLD

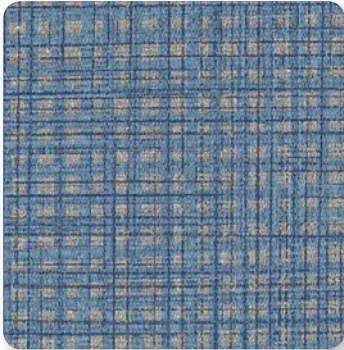


NTL222 JUNIPER

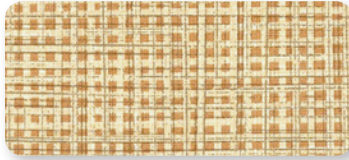


NTL228 WALNUT

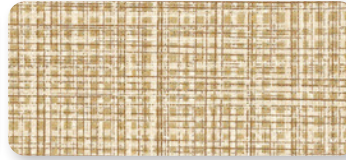
Raffia TIER 5



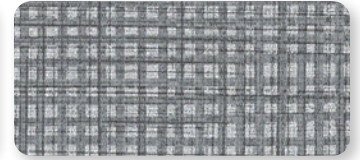
SCP2270 ACADEMY



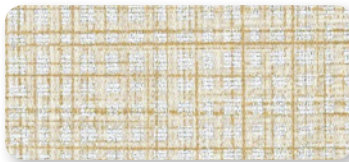
SCP2150 SHOW



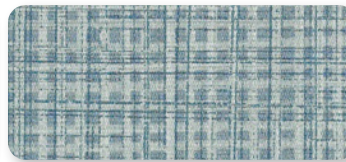
SCP2230 CINEMA



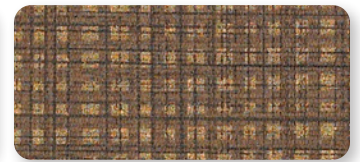
SCP2210 SILVER SCREEN



SCP2130 FLICK



SCP2190 PREMIER



SCP2310 PRODUCER

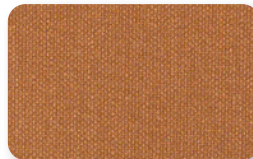
Tessuto TIER 3



SEN224 VENETTO



213 BELLINI



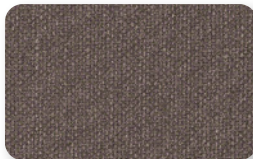
SEN220 MALTA



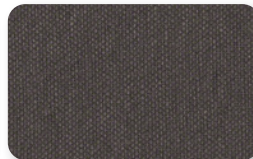
219 MARBLE



SEN222 LIME



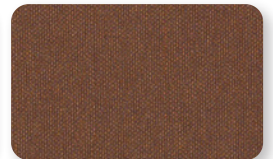
229 MURANO



234 PALAZZO



217 SENECA



SEN225 MINK



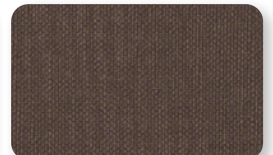
233 ADRIATIC



228 MARCO



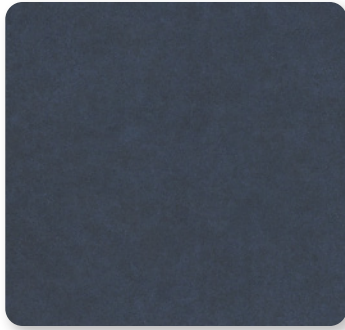
231 MAJESTY



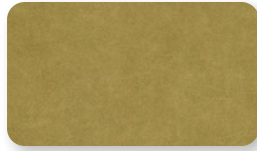
230 TRUFFLE



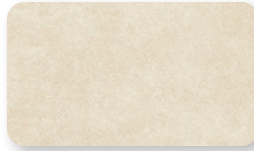
Galveston TIER 6



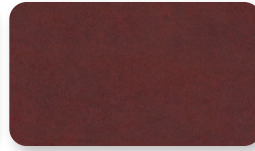
GV-004 TWILIGHT



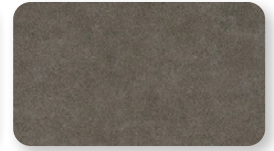
GV-003 CACTUS



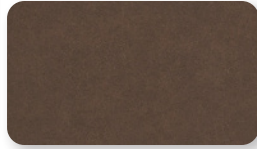
GV-007 CREAM



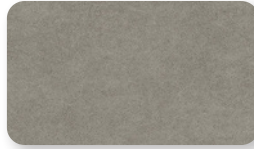
GV-011 OXBLOOD



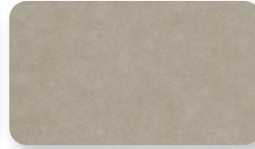
GV-016 WINCHESTER



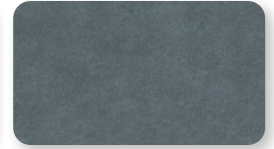
GV-010 CEDAR



GV-026 STUCCO



GV-017 DESERT



GV-014 STREAM

Belmont TIER 4



BL-002 CITRUS



BL-009 CLEMINTINE



BL-007 SISAL



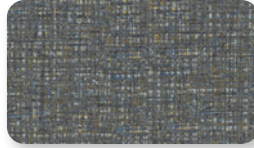
BL-004 OPAL



BL-024 TIDAL



BL-016 STONE



BL-000 GRAVEL

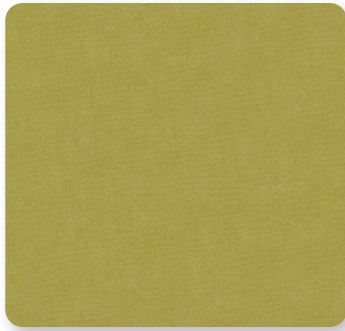


BL-027 PATINA



BL-017 DUNE

Icon TIER 3



IC-003 CELERY



IC-010 COFFEE



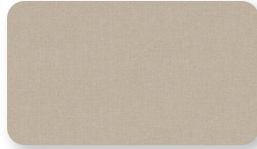
IC-013 GRASS



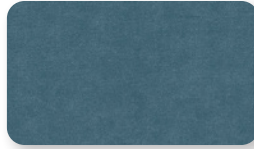
IC-034 MARINE



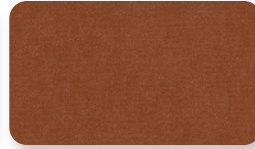
IC-001 SANGRIA



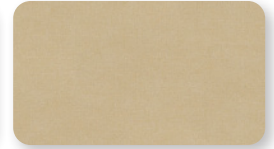
IC-017 SAND



IC-014 OCEAN



IC-019 TERRA

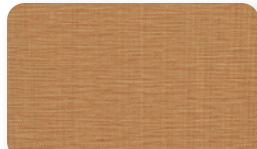


IC-027 ALMOND

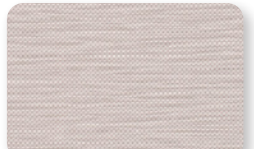
Midway TIER 2



MW-007 CEMENT



MW-009 COPPER



MW-017 SAND



MW-023 SPA



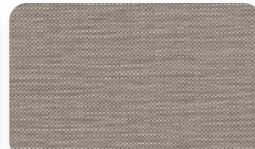
MW-003 MOSS



MW-013 ALGAE



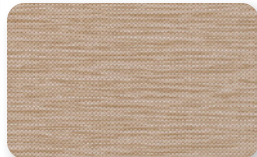
MW-004 INDIGO



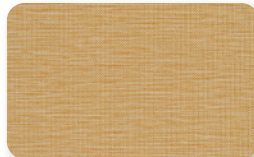
MW-000 STONE



MW-016 HAZE



MW-027 WHEAT



MW-002 SUNSHINE



MW-014 SKYLIGHT



MW-006 STORM

swatches are digital reproductions. perceived texture and coloring may vary on finished product monitor settings effect appearance. order physical swatches using chart links on page 8



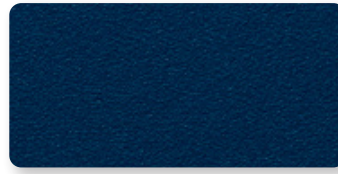
**Guardian**  
TIER 2



1325 ARMOR



1305 CONVOY



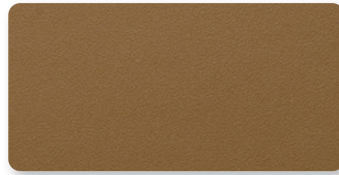
1323 MOAT



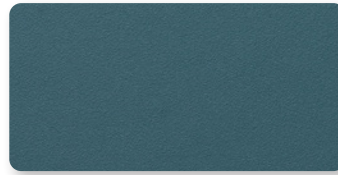
1319 SIREN



1324 SENTRY



1311 FENCE



1318 STEEL



1304 LATCH

**Savoy**  
TIER 2



9517 EUCALYPTUS



9524 BLACK



409 WARM TAUPE



9516 INDIGO

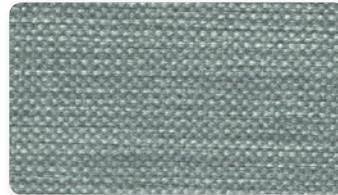
**Cassara**  
TIER 2



9611 AMETHYST



9613 CORK



9607 PATINA



9604 INDIGO

**Modena**  
TIER 1



2013 TITAN



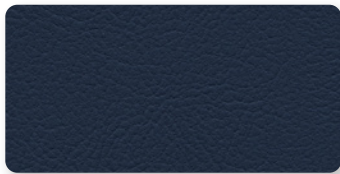
2022 ELEPHANT



2002 BLUEBIRD



2008 SEAGRASS



2014 INK



2019 NUTMEG

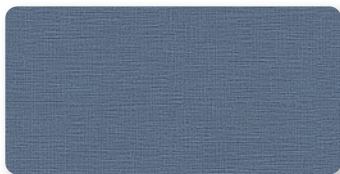


2007 FRESH



2001 FARRO

**Masiala**  
TIER 2



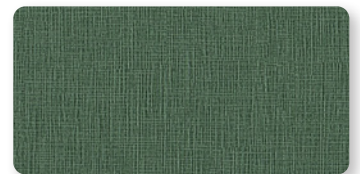
321 BLUESTAR



320 DEMIN



311 UNDERWATER



313 WOODLET



304 CALM



306 BLACK WALNUT



309 BERRY BUSH



317 DAMASCUS



**Dolce** TIER 2



6727 METEOR



6717 MOSS

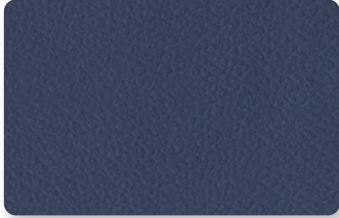


6724 JET

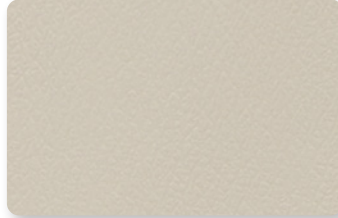


6725 INDIGO

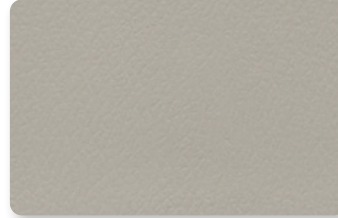
**Patriot Plus** TIER 2



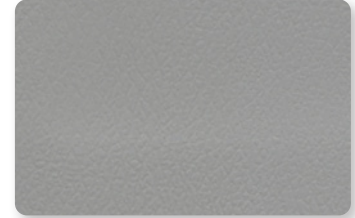
432 IMPERIAL BLUE



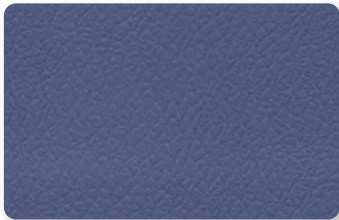
8602 OATMEAL



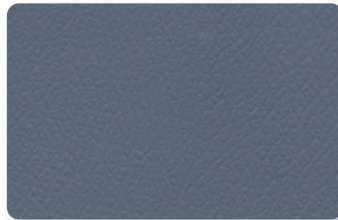
8604 CONCRETE



8667 DOVE



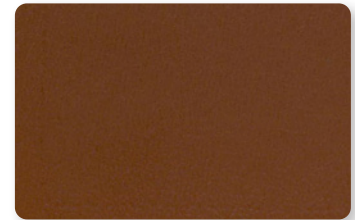
454 ROYAL BLUE



427 BLUERIDGE



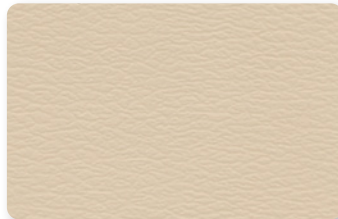
8584 TAUPE



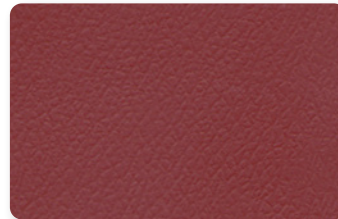
8516 CHESTNUT



8611 TERRA COTTA



8504 SAND

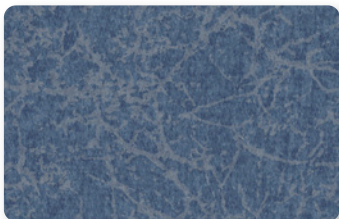


8533 PORT

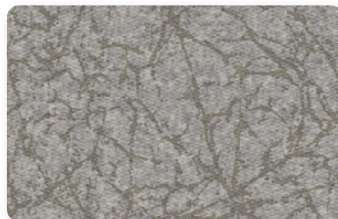


8626 EUCALYPTUS

**Renaissance** TIER 2



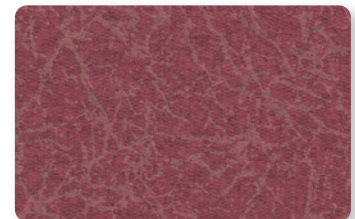
9214 STEEL BLUE



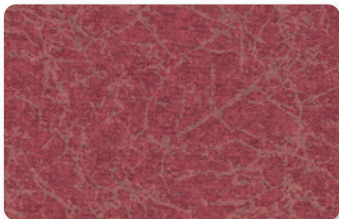
9201 COBBLESTONE



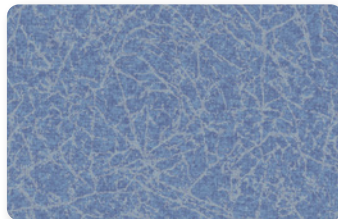
9205 GYPSUM



9208 WINEBERRY



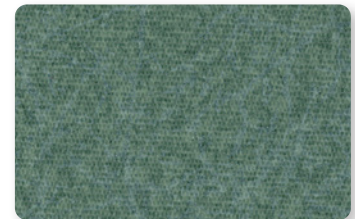
9203 PYRITE



9207 ICE BLUE



9210 CYPRESS



9212 BLUE JADE



**Color Variations** *swatches are digital reproductions. perceived texture and coloring may vary on finished product monitor and printer settings will effect appearance of color and texture order physical swatches using chart links on page 8*

**Pricing & Availability** *current at time of publication & subject to change without notice*

**Contact Customer Service** *for most current information, pricing, availability, freight quotes, and support +1.336.884.4096 | intensa@grahamfield.com*



Price Tier and Care Quick Reference | Care Codes detailed on next page | Link Icon connects to complete pattern selection, spec sheet, and care guide.

Stinson®	tier	care	link
Alamo	2	w	<a href="#">🔗</a>
Amplify	2	w-s	<a href="#">🔗</a>
Arbor	3	w	<a href="#">🔗</a>
Ardent	2	w	<a href="#">🔗</a>
Avant	3	w-s	<a href="#">🔗</a>
Bandwidth	6	w	<a href="#">🔗</a>
Blend	2	w	<a href="#">🔗</a>
Blink Ombre	5	w	<a href="#">🔗</a>
Box Chain	2	w	<a href="#">🔗</a>
Burkshire	4	w-s	<a href="#">🔗</a>
Cassidy 2.0	2	w-s	<a href="#">🔗</a>
Cesto	3	w-s	<a href="#">🔗</a>
Channel 2.0	3	w-s	<a href="#">🔗</a>
Cirque 2.0	5	w	<a href="#">🔗</a>
Citadel	3	w-s	<a href="#">🔗</a>
Clean Slate 2.0	3	w	<a href="#">🔗</a>
Connect 2.0 <sup>L</sup>	2	w	<a href="#">🔗</a>
Core 2.0	2	w	<a href="#">🔗</a>

Stinson®	tier	care	link
Criss Cross 2.0	2	w-s	<a href="#">🔗</a>
Discovery	3	w-s	<a href="#">🔗</a>
English Pub <sup>9</sup>	3	w-s	<a href="#">🔗</a>
Essential	2	w-s	<a href="#">🔗</a>
Fizz 2.0	4	w	<a href="#">🔗</a>
Flanders	3	w-s	<a href="#">🔗</a>
Flip <sup>9</sup>	6	w	<a href="#">🔗</a>
Frequency 2.0	5	w	<a href="#">🔗</a>
Fuse 2.0	2	w-s	<a href="#">🔗</a>
Gabby	2	w-s	<a href="#">🔗</a>
GeoMet <sup>L</sup>	2	w	<a href="#">🔗</a>
Grille 2.0	3	w	<a href="#">🔗</a>
Hopsack	3	w	<a href="#">🔗</a>
Kusari 2.0 <sup>9</sup>	3	w	<a href="#">🔗</a>
Lara	2	w	<a href="#">🔗</a>
Laredo 2.0 <sup>9</sup>	2	w-s	<a href="#">🔗</a>
Lattice	2	w	<a href="#">🔗</a>
Level 2.0	3	w	<a href="#">🔗</a>

Stinson®	tier	care	link
Loophole 2.0 <sup>L</sup>	3	w	<a href="#">🔗</a>
Lunaria <sup>9</sup>	6	w	<a href="#">🔗</a>
Matrix <sup>9L</sup>	2	w-s	<a href="#">🔗</a>
Meteor	6	w	<a href="#">🔗</a>
Mica 2.0 <sup>9</sup>	4	w	<a href="#">🔗</a>
Moccasin 2.0	3	w	<a href="#">🔗</a>
Montana 2.0	3	w	<a href="#">🔗</a>
Natural World 2.0	6	w-s	<a href="#">🔗</a>
Naugasoft <sup>9L</sup>	3	w-s	<a href="#">🔗</a>
Nishiki 2.0	3	w-s	<a href="#">🔗</a>
Obi Stripe	6	w	<a href="#">🔗</a>
Orbit 2.0	3	w	<a href="#">🔗</a>
Oxford 2.0	3	w	<a href="#">🔗</a>
Painted Moon	5	w-s	<a href="#">🔗</a>
Pebble Trail	5	w	<a href="#">🔗</a>
Ping Pong	6	w	<a href="#">🔗</a>
Pod	6	w	<a href="#">🔗</a>
Polygon	6	w	<a href="#">🔗</a>

Stinson®	tier	care	link
Promenade 2.0 <sup>L</sup>	5	w	<a href="#">🔗</a>
Raffia 2.0	5	w	<a href="#">🔗</a>
Rally 2.0 <sup>9</sup>	2	w-s	<a href="#">🔗</a>
Rialto <sup>9L</sup>	3	w-s	<a href="#">🔗</a>
Riverstone	3	w	<a href="#">🔗</a>
Rogue II <sup>9</sup>	2	w-s	<a href="#">🔗</a>
Round Trip	6	w	<a href="#">🔗</a>
Route	2	w	<a href="#">🔗</a>
Runway	3	w-s	<a href="#">🔗</a>
Sand Wave	9	w-s	<a href="#">🔗</a>
Satchel	3	w-s	<a href="#">🔗</a>
Scout 2.0	3	w-s	<a href="#">🔗</a>
Script 2.0	4	w	<a href="#">🔗</a>
Sea of Clouds	5	w-s	<a href="#">🔗</a>
Sentiero	3	w-s	<a href="#">🔗</a>
Sentry-HC 2.0	3	w	<a href="#">🔗</a>
Shantung 2.0	3	w	<a href="#">🔗</a>
Sirocco	6	w	<a href="#">🔗</a>

Stinson®	tier	care	link
Sleek 2.0 <sup>9</sup>	3	w-s	<a href="#">🔗</a>
Smoothie 2.0	3	w-s	<a href="#">🔗</a>
Stat Con <sup>9</sup>	6	w	<a href="#">🔗</a>
Stitch in Time <sup>9L</sup>	1	w-s	<a href="#">🔗</a>
Strand 2.0 <sup>9</sup>	3	w-s	<a href="#">🔗</a>
Stride	3	w	<a href="#">🔗</a>
Sumi	6	w-s	<a href="#">🔗</a>
Tendril 2.0 <sup>L</sup>	2	w	<a href="#">🔗</a>
Tessuto 2.0	3	w	<a href="#">🔗</a>
Tilt	2	w	<a href="#">🔗</a>
Tinker	6	w	<a href="#">🔗</a>
Topography	5	w-s	<a href="#">🔗</a>
Touchstone	3	w-s	<a href="#">🔗</a>
Vector	4	w	<a href="#">🔗</a>
Walk the Line 2.0	6	w	<a href="#">🔗</a>
Watercolor Grid	6	w	<a href="#">🔗</a>
Weft	2	w	<a href="#">🔗</a>
Willow Wave	6	w-s	<a href="#">🔗</a>

Non-PVC <sup>F</sup>	tier	care	link
Arioso <sup>9L</sup>	7	w	<a href="#">🔗</a>
Attaché <sup>9</sup>	3	w	<a href="#">🔗</a>
Bond <sup>9L</sup>	6	w	<a href="#">🔗</a>
Chaos <sup>9</sup>	10	w	<a href="#">🔗</a>
Composite <sup>9</sup>	10	w-s	<a href="#">🔗</a>
Corium <sup>9L</sup>	7	w-s	<a href="#">🔗</a>
Didi <sup>9</sup>	6	w-s	<a href="#">🔗</a>
Effervescence 2.0 <sup>9L</sup>	8	w-s	<a href="#">🔗</a>
Etch <sup>9</sup>	8	w	<a href="#">🔗</a>
Fiberdrill <sup>9L</sup>	5	w	<a href="#">🔗</a>
Fiddlesticks <sup>9</sup>	10	w-s	<a href="#">🔗</a>
Flare <sup>9</sup>	10	w-s	<a href="#">🔗</a>
Galileo <sup>9</sup>	7	w-s	<a href="#">🔗</a>
Impress <sup>9L</sup> w/StaKleen™	5	w-s	<a href="#">🔗</a>
Jax <sup>9</sup>	8	w	<a href="#">🔗</a>
Katsura <sup>9</sup>	7	w-s	<a href="#">🔗</a>
Kid <sup>9</sup>	5	w-s	<a href="#">🔗</a>

Non-PVC <sup>F</sup>	tier	care	link
Mesa <sup>9L</sup>	C	w-s	<a href="#">🔗</a>
Modena 2.0 <sup>9L</sup>	7	w-s	<a href="#">🔗</a>
Petal Dots <sup>9</sup>	8	w-s	<a href="#">🔗</a>
Rain Pool <sup>9</sup>	8	w-s	<a href="#">🔗</a>
Savile <sup>9</sup>	7	w-s	<a href="#">🔗</a>
Sedona <sup>9L</sup>	C	w-s	<a href="#">🔗</a>
Silicone-Avail <sup>9</sup>	10	w-s	<a href="#">🔗</a>
Silicone-Downtown <sup>9L</sup>	10	w-s	<a href="#">🔗</a>
Silicone-Uptown <sup>9L</sup>	10	w-s	<a href="#">🔗</a>
Stage <sup>9</sup>	5	w-s	<a href="#">🔗</a>
Stallion <sup>9</sup>	6	w-s	<a href="#">🔗</a>
Staple <sup>9</sup>	2	w	<a href="#">🔗</a>
Sundance <sup>9L</sup> w/StaKleen™	5	w-s	<a href="#">🔗</a>
Tender <sup>9L</sup>	C	w-s	<a href="#">🔗</a>
Terra <sup>9</sup>	8	w	<a href="#">🔗</a>
Volterra-HC <sup>9L</sup>	C	w-s	<a href="#">🔗</a>
Wyatt <sup>9L</sup>	3	w-s	<a href="#">🔗</a>

Patty Madden <sup>F</sup>	tier	care	link
Affinity 2.0 <sup>L</sup>	6	w	<a href="#">🔗</a>
Bari 2.0	6	w	<a href="#">🔗</a>
Bubblerake 2.0	9	w	<a href="#">🔗</a>
Cassiopeia <sup>9</sup>	9	w-s	<a href="#">🔗</a>
Eli 2.0 <sup>L</sup>	3	w	<a href="#">🔗</a>
Hashtag	5	w	<a href="#">🔗</a>
Intersect	9	w	<a href="#">🔗</a>
Juxy 2.0	6	w	<a href="#">🔗</a>
La Scalina <sup>9</sup>	8	w	<a href="#">🔗</a>
Lava 2.0	9	w	<a href="#">🔗</a>
Lens <sup>9</sup>	9	w-s	<a href="#">🔗</a>
Live Wire	6	w	<a href="#">🔗</a>
Martini 2.0	6	w	<a href="#">🔗</a>
Median	6	w	<a href="#">🔗</a>
Odeon	9	w	<a href="#">🔗</a>
Olympus 2.0 <sup>L</sup>	6	w	<a href="#">🔗</a>
Origami	9	w	<a href="#">🔗</a>

Patty Madden <sup>F</sup>	tier	care	link
Orvilla <sup>9</sup>	9	w	<a href="#">🔗</a>
Parasail	8	w-s	<a href="#">🔗</a>
Perspective 2.0 <sup>L</sup>	6	w	<a href="#">🔗</a>
Prisma <sup>L</sup>	3	w	<a href="#">🔗</a>
Raya <sup>L</sup>	6	w	<a href="#">🔗</a>
Revolve 2.0	9	w	<a href="#">🔗</a>
Ripple 2.0	9	w	<a href="#">🔗</a>
Rivera <sup>9L</sup>	3	w	<a href="#">🔗</a>
Scoprena	9	w	<a href="#">🔗</a>
Swizzle	8	w-s	<a href="#">🔗</a>
Twist	9	w	<a href="#">🔗</a>
Verge	9	w	<a href="#">🔗</a>
Vortexia 2.0	9	w	<a href="#">🔗</a>
Waterwand 2.0 <sup>L</sup>	6	w	<a href="#">🔗</a>
Wicker 2.0	6	w	<a href="#">🔗</a>
Winnily <sup>L</sup>	5	w	<a href="#">🔗</a>
Ybor <sup>L</sup>	3	w	<a href="#">🔗</a>

Michael Graves <sup>F</sup>	tier	care	link
Entrada <sup>9L</sup>	2	w	<a href="#">🔗</a>
Excursion <sup>9L</sup>	2	w	<a href="#">🔗</a>
Latitude <sup>9L</sup>	2	w	<a href="#">🔗</a>
Vaise <sup>9L</sup>	2	w-s	<a href="#">🔗</a>

 CF Stinson Portfolio  
Approved Vinyl Upholstery

Spradling®	tier	care
Guardian	2	s
Savoy	2	s
Cassara	2	s
Modena	1	s
Masialas	2	s
Dolce <sup>9</sup>	2	s
Patriot Plus	2	s
Renaissance	2	s

Mayer Fabrics	tier	care	link
Belmont	4	w-s	<a href="#">🔗</a>
Caressa	3	CFC	<a href="#">🔗</a>
Catwalk	4	CFC	<a href="#">🔗</a>
Chaps	4	w-s	<a href="#">🔗</a>
Cirque	4	CFC	<a href="#">🔗</a>
Etch	2	CFC	<a href="#">🔗</a>
Explorer	2	w-s	<a href="#">🔗</a>
Galveston	6	CFC	<a href="#">🔗</a>

Mayer Fabrics	tier	care	link
Icon	3	w-s	<a href="#">🔗</a>
Imprint	2	CFC	<a href="#">🔗</a>
Interlace	4	CFC	<a href="#">🔗</a>
Key Largo	2	w-s	<a href="#">🔗</a>
Kinsey	2	w-s	<a href="#">🔗</a>
Ludlow	2	w-s	<a href="#">🔗</a>
Lyric	2	w	<a href="#">🔗</a>
Matka	3	w-s	<a href="#">🔗</a>

Mayer Fabrics	tier	care	link
Maverick	2	w-s	<a href="#">🔗</a>
Midway	2	w	<a href="#">🔗</a>
Mingle	3	w-s	<a href="#">🔗</a>
Mode	4	CFC	<a href="#">🔗</a>
Noble	2	CFC	<a href="#">🔗</a>
Outback	2	w-s	<a href="#">🔗</a>
Ryder	2	w-s	<a href="#">🔗</a>
Silverweave	4	CFC	<a href="#">🔗</a>

Mayer Fabrics	tier	care	link
Sketch	3	w-s	<a href="#">🔗</a>
Sonnet	4	w-s	<a href="#">🔗</a>
Spartan	2	w-s	<a href="#">🔗</a>
Truss	4	w-s	<a href="#">🔗</a>
Verona	3	w-s	<a href="#">🔗</a>
Zip	2	CFC	<a href="#">🔗</a>

Intensa®	tier	care	link
Standard Vinyl <sup>9</sup>	1	D	—
Venue <sup>9</sup>	2	D	<a href="#">🔗</a>
Vista	2	D	<a href="#">🔗</a>

 link to pattern swatch, spec, and care |  F by CF Stinson |  L limited availability on certain colors |  9 product is not CFFA-HealthCare |  tier C Call for pricing



**RECOMMENDED****Care & Cleaning**

tier 1 standard vinyl - industry standard colors

**Regular Cleaning & Maintenance**

Clean the soiled area with mild soap and water, then rinse with fresh water and wipe dry with a clean cloth.

**Food Stains / Oils**

Wipe affected area with a soft cloth or soft bristle brush using a non-abrasive cleaner, for example Formula 409® or Fantastik®. Rinse with fresh water and wipe dry.

**Difficult Stains**

Clean the soiled area with 50% a solution of isopropyl Alcohol and water. It is important to rinse the cleaned area with fresh water after applying the alcohol solution.

**Healthcare / Disinfection**

Clean the soiled area with a 10% solution of Household Bleach and water. It is important to rinse the cleaned area with fresh water after applying the bleach solution.

**Example**

Dirt  
Dust  
Grime

Ketchup  
Chocolate  
Coffee  
Tea  
Juice

Eyeshadow/  
Mascara  
Lipstick  
Crayon  
Grease  
Mustard

Blood  
Urine  
Betadine

**Disinfectants**

In addition to cleaning, healthcare facilities maintain disinfecting regimens to reduce the spread of infections. There is a wide variety of available biocides that include bleaches, peroxides and quaternary ammonium products, among others. They should always be used at the recommended dilution, never in concentrated form. To prolong the life of coated fabrics, the disinfectants should be rinsed off after each use. It should be noted that misuse of disinfectants is the major source of surface deterioration.

**For Color Transfer**

Certain clothing and accessory dyes (such as those used on denim jeans) may migrate to lighter colors. This phenomenon is increased by humidity and temperature and is irreversible. Neither the manufacturer nor GF Health Products, Inc. is responsible for any damages caused in this manner. Please check compatibility when using this product in combination with painted or varnished surfaces.

**Note:** The cleaning products recommended were used in a laboratory setting. This information is not a guarantee and does not relieve the user from the responsibility of the proper and safe use of the product and referenced cleaning agents. Neither Intensa, Inc. nor GF Health Products, Inc. has a relationship with the manufacturer of these cleaning products.

**Stinson  
MAYER****RECOMMENDED****Care & Cleaning Codes**

use chart links on previous page for full details

**W**

Clean with water-based foam or water-based cleaners only. Do not use solvents. We recommend using a professional cleaning service.

Bleach solutions of up to 10% may be used for more difficult stains.

**W-S**

For water-based stains use water-based cleaners. For oil-based stains use solvent-based cleaners. We recommend using a professional cleaning service. Bleach solutions of up to 20% may be used for more difficult stains.

Crypton® Cleaners are recommended to clean many of Stinson's fabrics. These specifically developed cleaners are water-based, pH neutral, biodegradable, easy to use, and do not contain bleach, solvents or harsh chemicals. @Crypton® Cleaners

**S**

Clean the whole surface in a circular motion using pH neutral liquid hand soap and water (1 part soap to 9 parts water). Wipe with a clean damp cloth to get rid of any excess soap. Repeat as needed and then let dry.

**D**

After disinfection, hand dish-washing soap and water or Formula 409® may be used with a soft cloth or damp sponge to remove chemical residue.

After cleaning, rinse area with clean water, then dry with a clean, lint-free cloth.

Water rinse recommended after each disinfectant application.

**CFC**

Clean with mild soap and water or Fantastik® or Formula 409® may be used with a soft cloth. More stubborn stains may be eliminated using a cotton cloth soaked in 70-91% of isopropyl alcohol. Wipe without spreading stain to surrounding area. Repeat with vigorous rubbing in a circular motion. For textured material, a soft brush is recommended. Rinse with fresh water and wipe dry.

**Note:** The cleaning products recommended were used in a laboratory setting. This information is not a guarantee and does not relieve the user from the responsibility of the proper and safe use of the product and referenced cleaning agents. Neither CF Stinson LLC, Mayer Fabrics, nor GF Health Products, Inc. has a relationship with the manufacturer of these cleaning products.

**RECOMMENDED****Care & Cleaning**

**Clean within 24 hours to avoid permanent stains in the surface. After this time has elapsed, effectiveness drops to 50%.**

We recommend cleaning at least once a week to extend the lifespan of the upholstery, which will prevent dirt and contamination buildup and permanent staining. In the event of a spill, wipe off any excess right away with a dry white cloth or fabric, but careful not to spread to remaining surface.



Clean the whole surface in a circular motion using pH neutral liquid hand soap and water (1 part soap to 9 parts water). Check the Approved Cleaners guide for recommended cleaning products. Wipe with a clean damp cloth to get rid of any excess soap. Repeat as needed and then let dry.



**f** If there is any buildup that cannot be removed with soapy water, a mixture of alcohol and water (1 part isopropyl alcohol to 9 parts water) can be used as a last resort. Remember, using alcohol on a regular basis can affect the properties of the product.



Once a month, you can use a soft-bristle brush for a deeper cleaning. Remember, light colors need more care, more often.

Some products have more detailed procedures and/or restrictions; see specifics in below guides:

[Cleaning Guides specific for each finish.](#) [www.spradling.group]

[Guide to Healthcare Surface Disinfection for the Real World.](#) [www.spradling.group]

**Disinfectants**

There is a wide variety of available biocides that include bleaches, peroxides and quaternary ammonium products, among others. They should always be used at the recommended dilution, never in concentrated form. To prolong the life of coated fabrics, the disinfectants should be rinsed off after each use.

If you need to disinfect the product because it has come into contact with organic material (blood, urine or fecal matter), check the [disinfection guide](#) for appropriate cleaning products. Clean with a clean white cloth or fabric. If you choose to use a bleach solution, only use 0.5% concentration (1 part bleach to 10 parts water). Rinse and wipe with a clean damp cloth to get rid of any excess and dry.

**For Color Transfer**

Our products don't transfer onto other materials, but some clothing items (like jeans, microfibers and dark fabrics) could transfer their color to the coated fabrics, depending on how they are dry-cleaned. This happens more with dampness and higher temperatures and is irreversible. Neither GF Health Products, Inc. nor Spradling International, Inc. is responsible for any damages caused in this manner. Please check compatibility when using this product in combination with painted or varnished surfaces.

**Note:** The cleaning products recommended were used in a laboratory setting. This information is not a guarantee and does not relieve the user from the responsibility of the proper and safe use of the product and referenced cleaning agents. Neither Spradling International, Inc. nor GF Health Products, Inc. has a relationship with the manufacturer of these cleaning products.

*f this section of cleaning guide does not apply to Dolce fabric*



