

Approved Vinyl Upholstery Selections



TIER 1 Standard Vinyl Upholstery [xx]

		
AL ALABASTER	AQ AQUA GREEN	AR ARTICHOKE
		
BL BLACK	BU BLUE	BT BRITISH TAN
		
DO DOE	DB DUSTY BLUE	GR GRAY
		
MO MOSS	NA NAVY	NO NORTHWOODS
		
OG OCEAN GRAY	PM PALM	PL PEARL
		
PU PLUM	ST SADDLE TAN	SH SHADOW
		
WH SUPER WHITE	TL TEA LEAF	TE TEAL
		
VI VIOLET	WG WARM GRAY	WW WEDGEWOOD

Tier 1 Recommended Care & Cleaning



Regular Cleaning & Maintenance

Clean the soiled area with mild soap and water, then rinse with fresh water and wipe dry with a clean cloth.

Example

Dirt
Dust
Grime



Food Stains / Oils

Wipe affected area with a soft cloth or soft bristle brush using a non-abrasive cleaner, for example Formula 409® or Fantastik®. Rinse with fresh water and wipe dry.

Ketchup
Chocolate
Coffee
Tea
Juice



Difficult Stains

Clean the soiled area with 50% a solution of isopropyl Alcohol and water. It is important to rinse the cleaned area with fresh water after applying the alcohol solution.

Eyeshadow/
Mascara
Lipstick
Crayon
Grease
Mustard



Healthcare / Disinfection

Clean the soiled area with a 10% solution of Household Bleach and water. It is important to rinse the cleaned area with fresh water after applying the bleach solution.

Blood
Urine
Betadine

Disinfectants

In addition to cleaning, healthcare facilities maintain disinfecting regimens to reduce the spread of infections. There is a wide variety of available biocides that include bleaches, peroxides and quaternary ammonium products, among others. They should always be used at the recommended dilution, never in concentrated form. To prolong the life of coated fabrics, the disinfectants should be rinsed off after each use. It should be noted that misuse of disinfectants is the major source of surface deterioration.

For Color Transfer

Certain clothing and accessory dyes (such as those used on denim jeans) may migrate to lighter colors. This phenomenon is increased by humidity and temperature and is irreversible. Please check compatibility when using this product in combination with painted or varnished surfaces

Note

The information in this cleaning guide refers to performance in specific tests conducted under laboratory conditions. This information is not a guarantee and does not relieve the user from the responsibility of the proper and safe use of the product and referenced cleaning agents. Neither Nassimi LLC, Intensa, nor GF Health Products, Inc. have a relationship with the manufacturers of those cleaning products.

Color Variations

Swatches are digital reproductions. Perceived texture and coloring may vary on finished product. Monitor or printer settings will affect appearance of color.

Fabric Availability

Current at time of publication and subject to change without notice. Contact Customer Service for the most current availability.

published April 2025



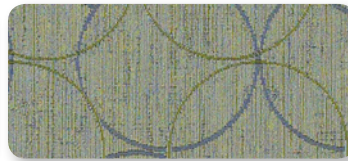
Olympus TIER 6



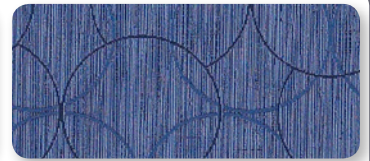
OLY204 DUNE



OLY202 CORIANDER



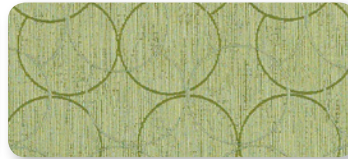
OLY213 LAUREL



OLY210 ADMIRAL



OLY01 MELON



OLY09 FERN



OLY208 SHOYA

Natural World TIER 6



NTL221 TIMBER



NTL223 MARIGOLD



NTL222 JUNIPER

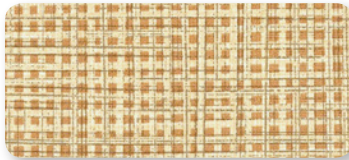


NTL228 WALNUT

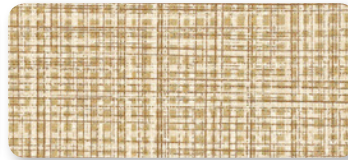
Raffia TIER 4



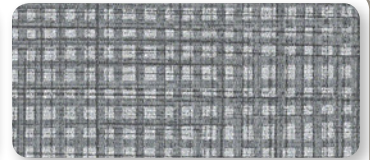
SCP2270 ACADEMY



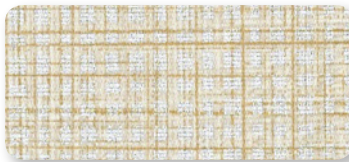
SCP2150 SHOW



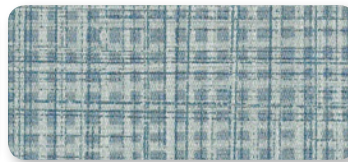
SCP2230 CINEMA



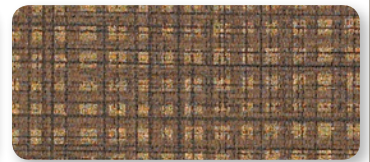
SCP2210 SILVER SCREEN



SCP2130 FLICK



SCP2190 PREMIER



SCP2310 PRODUCER

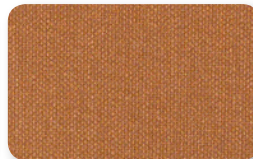
Tessuto TIER 3



SEN224 VENETTO



213 BELLINI



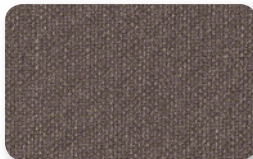
SEN220 MALTA



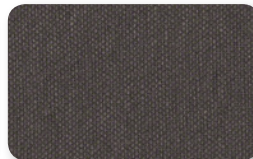
219 MARBLE



SEN222 LIME



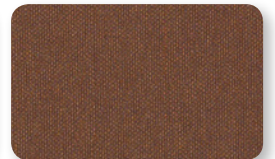
229 MURANO



234 PALAZZO



217 SENECA



SEN225 MINK



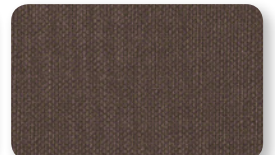
233 ADRIATIC



228 MARCO



231 MAJESTY



230 TRUFFLE



Reference this chart for Price Tier | Care Codes detailed below | Link Icon connects to pattern swatch selection, spec sheet, care guide, and more

Stinson®	tier	care	link	Stinson®	tier	care	link	Stinson®	tier	care	link	PVC Free ^F	tier	care	link	PVC Free ^F	tier	care	link
Alamo	2	w	link	Grille 2.0	3	w	link	Rogue 2.0 ⁹	2	w-s	link	Arioso ⁹	6	w	link	Modena 2.0 ⁹	7	w-s	link
Amplify	2	w-s	link	Hopsack	3	w	link	Round Trip	6	w	link	Attaché ⁹	3	w	link	Petal Dots ⁹	8	w-s	link
Arbor	3	w	link	Kilkenny Tweed 2.0 ⁹	3	w-s	—	Route	2	w	link	Bond ⁹	7	w	link	Rain Pool ⁹	9	w-s	link
Ardent	2	w	link	Kusari 2.0 ⁹	3	w	link	Runway	3	w-s	link	Chaos ⁹	10	w	link	Savile ⁹	7	w-s	link
Avant	3	w-s	link	Lara	2	w	link	Satchel	3	w-s	link	Composite ⁹	10	w-s	link	Sedona ⁹	C	w-s	link
Bandwidth	6	w	link	Laredo ⁹	2	w-s	link	Scout 2.0	3	w-s	link	Corium ⁹	7	w-s	link	Silicone-Avail ⁹	9	w-s	link
Blend	2	w	link	Lattice	2	w	link	Script 2.0	4	w	link	Didi ⁹	6	w-s	link	Silicone-Downtown ⁹	9	w-s	link
Blink Ombre	5	w	link	Level 2.0	3	w	link	Sea of Clouds	5	w-s	link	Effervescence 2.0 ⁹	7	w-s	link	Silicone-Uptown ⁹	9	w-s	link
Box Chain	2	w	link	Loophole 2.0	3	w	link	Sentiero	3	w-s	link	Etch ⁹	7	w	link	Solitaire ⁹	2	w-s	link
Budget Black ^{D9}	1	w	—	Lunaria ⁹	6	w	link	Sentry-HC 2.0	3	w	link	Fiberdrill ⁹	5	w	link	Stage ⁹	5	w-s	link
Burkshire	4	w-s	link	Matrix ⁹	3	w-s	link	Shantung 2.0	2	w	link	Fiddlesticks ⁹	10	w-s	link	Stallion ⁹	6	w-s	link
Cassidy 2.0	2	w-s	link	Meteor	6	w	link	Sirocco	6	w	link	Flare ⁹	10	w-s	link	Staple ⁹	2	w	link
Cesto	3	w-s	link	Mica 2.0 ⁹	3	w	link	Sleek 2.0 ⁹	3	w-s	link	Galileo ⁹	7	w-s	link	Sundance ⁹ w/StaKleen™	5	w-s	link
Channel 2.0	3	w-s	link	Moccasin 2.0	2	w	link	Smoothie 2.0	3	w-s	link	Impress ⁹ w/StaKleen™	5	w-s	link	Tender ⁹	C	w-s	link
Chroma ⁹	5	w-s	link	Montana 2.0	2	w	link	Spirit Millennium ^{D9}	3	w	—	Katsura ⁹	7	w-s	link	Terra ⁹	8	w	link
Cirque 2.0	5	w	link	Natural World 2.0	6	w-s	link	Stat Con ⁹	6	w	link	Kid ⁹	5	w-s	link	Volterra-HC ⁹	C	w-s	link
Citadel	3	w-s	link	Naugasoft ⁹	2	w-s	link	Stitch in Time ⁹	1	w-s	link	Mesa ⁹	C	w-s	link	Wyatt ⁹	3	w-s	link
Clean Slate 2.0	3	w	link	Nishiki 2.0	3	w-s	link	Strand ⁹	3	w-s	link								
Colorguard ^{D9}	2	w	—	Orbit 2.0	3	w	link	Stride	3	w	link								
Connect 2.0	2	w	link	Overlay ⁹	3	w-s	link	Sumi	6	w-s	link								
Core	2	w	link	Oxford 2.0	3	w	link	Symphony Classic ^D	2	w	—								
Criss Cross 2.0	3	w-s	link	Painted Moon	5	w-s	link	Tendril 2.0	2	w	link								
English Pub ⁹	3	w-s	link	Patriot Pluss II 2.0 ^D	2	w	—	Tessuto 2.0	3	w	link								
Essential	2	w-s	link	Pebble Trail	5	w	link	Tilt	2	w	link								
Fizz 2.0	3	w	link	Ping Pong	6	w	link	Tinker	6	w	link								
Flanders	3	w-s	link	Pod	6	w	link	Touchstone	3	w-s	link								
Flip ⁹	6	w	link	Polygon	6	w	link	Vector	4	w	link								
Frequency 2.0	5	w	link	Promenade 2.0	5	w	link	Walk the Line 2.0	6	w	link								
Fuse 2.0	2	w-s	link	Raffia 2.0	4	w	link	Watercolor Grid	6	w	link								
Gabby	2	w-s	link	Rally ⁹	2	w-s	link	Weft	2	w	link								
GeoMet	2	w	link	Rialto ⁹	3	w-s	link	Whisper 2.0 ^{D9}	2	w	—								
Grand Sierra 2.0 ^{D9}	2	w	—	Riverstone	3	w	link	Ziggy 2.0	3	w	link								

[link](#) CF Stinson Complete Selection of Approved Vinyl Upholstery

Spradling®	tier	care	link	Spradling®	tier	care	link	Intensa	tier	care	link
Guardian	2	s	link	Masialas	2	s	link	Standard Vinyl ⁹	1	D	link
Savoy	2	s	link	Dolce ⁹	2	s	link	Venue ⁹	2	D	link
Cassara	2	s	link	Patriot Plus	2	s	link	Vista	2	D	link
Modena	1	s	link	Renaissance	2	s	link				

^F by CF Stinson ^D product has been renamed ⁹ product is not CFFA-HealthCare ^{tier C} Call for pricing 201 Certified [link](#) to pattern swatch, spec, and care guide

Cleaning Codes [visit link for full details](#)

W Clean with water-based foam or water-based cleaners only. Do not use solvents. We recommend using a professional cleaning service. Bleach solutions of up to 10% may be used for more difficult stains.

W-S For water-based stains use water-based cleaners. For oil-based stains use solvent-based cleaners. We recommend using a professional cleaning service. Bleach solutions of up to 20% may be used for more difficult stains.

W-S: Crypton® Cleaners are recommended to clean many of their fabrics. Specifically developed these cleaners are water-based, pH neutral, biodegradable, easy to use, and do not contain bleach, solvents or harsh chemicals. [Crypton® Cleaners](#)

S Clean the whole surface in a circular motion using pH neutral liquid hand soap and water (1 part soap to 9 parts water). Wipe with a clean damp cloth to get rid of any excess soap. Repeat as needed and then let dry.

D After disinfection, hand dish-washing soap and water or Formula 409® may be used with a soft cloth or damp sponge to remove chemical residue. After cleaning, rinse area with clean water, then dry with a clean, lint-free cloth. Water rinse recommended after each disinfectant application.

Note: The cleaning products recommended were used in a laboratory setting. This information is not a guarantee and does not relieve the user from the responsibility of the proper and safe use of the product and referenced cleaning agents. GF Health Products, Inc. has no relationship with the manufacturer of these cleaning products.



INTENSA
Composition & Backing

PVC	■
Polyester Backing (100%)	■
Polyester / Cotton Backing (75% / 25%)	—
Polyester Bush Knit (100%)	—
Thickness (mm)	0.97
Weight (oz/liner yd)	30
Roll Size (yd)	30
Roll Width (inch)	54

Flammability Codes*

NFPA 260 - Cover Fabric - Class 1	■
UFAC Fabric - Class 1	■
CAL TB 117-2013	■
FMVSS 302	—

Finishes & Performance

Abrasion Resistance (k) CFFA-1 ASTM D-4157-13	250
Antibacterial Protection (hours)	—
Bleach Resistance 10% Bleach Solution Cleanable	■
Blue Wool (hours) AATCC TM 16-3 / NTC 1479 / CFFA-2a	1000
Colorfast to UV (hours) ASTM G154-16	1000
Crocking Resistance AATCC 8-2007	Wet 5 Dry 5
Flex Resistance (k) ASTM D2097-03	25+
Mildew Resistance ASTM G21-13	■
Stain Resistance	■
Sulfide Stain Resistance	■
Breaking Strength ASTM D751-06	Warp 95 Fill 73
Tear Strength ASTM D751-06	Tongue Tear 11.9 Warp 15.4 Fill
Seam Strength ASTM D751-06	Tack Tear 67 Warp 43 Fill
Wyzenbeek Cotton Duck (k)	250
Cold Crack (F) CFFA-6A-2007	-20°

STINSON
Composition & Backing

	Olympus	Natural World	Raffia	Tessuto
PVC	—	—	—	—
Non Phthalate Vinyl Surface	■	■	■	■
Non-PVC	—	—	—	—
Non-PVC / Silicone	—	—	—	—
Polyester Backing (100%)	■	■	■	■
Polyester / Cotton Backing (%)	—	—	—	—
Polyester / Rayon Backing (%)	—	—	—	—
Nylon Backing (100%)	—	—	—	—
Weight (oz/liner yd)	32	30	30	30
Roll Size (yd)	30	30	30	30
Roll Width (inch)	54	54	54	54

Flammability Codes*

	OLY	NTW	RAF	TES
NFPA 260 - Cover Fabric - Class 1	■	■	■	■
UFAC Fabric - Class 1	■	■	■	■
CAL TB 117-2013 - Section 1	■	■	■	■
FMVSS 302	—	—	—	—
BIFMA	—	—	—	—
IMO 2010 FTP Code, Part 8 (3.1) - or - FTP MSC 307 (88) Part 8 (3.1 & 3.2)	—	—	—	—
Does not contain flame retardants	■	■	■	■

Finishes & Top Coats

	OLY	NTW	RAF	TES
Advanced Soil & Stain Resistant Top Coat	—	■	■	■
Zeron® Protective Finish	■	—	—	—
Denim Stain Resistant	■	■	■	■
Ink Resistant	■	—	—	—

Performance & Environmental

	OLY	NTW	RAF	TES
Abrasion Resistance (k) ASTM D-4157-13	■	■	■	■
Bleach Resistance 10% Bleach Solution Cleanable	■	■	■	■
CFFA-Healthcare-201: Certified	■	■	■	■
Greenguard / Greenguard Gold: Certified	■	■	■	■
Hydrolytic Stability ISO 1419 Tropical Test Method C (7+ weeks)	—	—	—	—
REACH	■	■	■	■
RoHS	■	■	■	■

* This term and any corresponding data refer to the typical performance in the specific tests indicated and should not be construed to imply the behavior of this or any other material under actual fire conditions



GREEN COLLECTION **GUARDIAN** eco^{ense} BY SPRADLING TIER 6

1325 ARMOR	1305 CONVOY	1323 MOAT	1319 SIREN
1324 SENTRY	1311 FENCE	1318 STEEL	1304 LATCH

GREEN **SAVOY** eco^{ense} BY SPRADLING

9517 EUCALYPTUS	9524 BLACK	409 WARM TAUPE	9516 INDIGO
-----------------	------------	----------------	-------------

GREEN **CASSARA** eco^{ense} BY SPRADLING

9611 AMETHYST	9613 CORK	9607 PATINA	9604 INDIGO
---------------	-----------	-------------	-------------

GREEN COLLECTION **MODENA** eco^{ense} BY SPRADLING

2013 TITAN	2022 ELEPHANT	2002 BLUEBIRD	2008 SEAGRASS
2014 INK	2019 NUTMEG	2007 FRESH	2001 FARRO

GREEN COLLECTION **MASIALA** eco^{ense} BY SPRADLING

321 BLUESTAR	320 DEMIN	311 UNDERWATER	313 WOODLET
304 CALM	306 BLACK WALNUT	309 BERRY BUSH	317 DAMASCUS



Composition & Backing

	Dolce	Patriot Plus	Renaissance	Guardian	Savoy	Cassara	Modena	Masiala
PVC	—	■	■	■	■	—	■	■
PU	■	—	—	—	—	—	—	—
TPE	—	—	—	—	—	■	—	—
Polyester Backing (100%)	—	—	—	—	—	■	—	—
Polyester Backing Hi-Loft™ (100%)	—	—	■	—	■	—	■	—
Polyester Backing Ultra Hi-Loft™ (100%)	—	—	—	■	—	—	—	—
Polyester Backing Hi-Loft™ RPET (100%)	—	—	—	—	—	—	—	■
Polyester / Cotton Backing	—	■	—	—	—	—	—	—
Rayon Backing (100%)	■	—	—	—	—	—	—	—
Weight (oz/liner yd)	15	34	32	30	30	22	26	31
Roll Size (yd)	30	30	30	30	30	30	30	30
Roll Width (inch)	54	54	54	54	54	54	54	54

Flammability Codes*

	DOL	PAT	REN	GUA	SAV	CAS	MOD	MAI
NFPA 260 Cover Fabric - Class 1	—	■	■	■	■	■	■	■
UFAC Fabric Class 1	—	■	■	■	■	■	■	■
CAL TB 117-2013	■	■	■	■	■	■	■	■
FMVSS 302	—	■	—	—	—	■	—	—
EU/US:IMO Res. MSC.307 (88) (FTP2010)	—	—	—	—	—	—	—	■
BS 5852 - UK Source 0	■	—	—	—	—	—	—	—

Finishes & Performance

	DOL	PAT	REN	GUA	SAV	CAS	MOD	MAI
PBG+ PERMABLOK PERMAGUARD	—	—	—	■	■	—	—	—
PERMABLOK ADVANCED VINYL PROTECTION	—	■	■	—	—	—	—	■
PERMABLOK PLUS+ ADVANCED VINYL PROTECTION	—	—	—	—	—	—	■	—
SUREGUARD™	—	—	—	—	—	■	—	—
Abrasion Resistance (k) CFFA-1 ASTM D-4157-02	100	100	100	100	100	100	100	100
Antibacterial Protection (hours)	—	—	—	1k	—	—	—	—
Anti-Static ASTM D257	—	■	■	■	■	■	■	■
Blue Wool (hours) AATCC TM 16-3/NTC 1479/CFFA-2a	—	1k	1k	1k	1k	1k	1k	1k
Denim Stain Resistance CFFA70	—	■	■	■	■	■	■	—
Mildew Resistance ASTM G21	—	—	■	■	—	—	■	—
Stain Resistance in Healthcare Environment CFFA142	—	■	■	■	■	■	■	■
Sulfide Stain Resistance Fisher Body TM31-12-	—	■	■	■	■	—	■	■
CFFA-HEALTHCARE-201C	—	■	■	■	■	■	■	■
QUV Stabilized Pigments (hours)	650	—	—	650	—	—	—	—
Wyzenbeek Cotton Duck	#10	#10	#10	#10	#10	#10	#10	#10
Cold Crack (F)	-10°	-20°	-20°	-10°	-10°	-10°	-10°	-10°

COLOR VARIATIONS Swatches are digital reproductions. Perceived texture and coloring may vary on finished product. Monitor and printer settings will effect appearance of color.



PERFORMANCE

DOLCE

			
6727 METEOR	6717 MOSS	6724 JET	6725 INDIGO




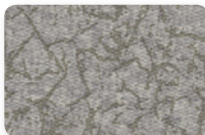

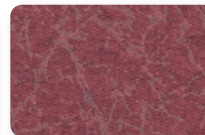




PREMIERE COLLECTION

PATRIOT PLUS NEO

			
432 IMPERIAL BLUE	8602 OATMEAL	8604 CONCRETE	8567 DOVE
			
454 ROYAL BLUE	427 BLUERIDGE	8584 TAUPE	8516 CHESTNUT
			
8611 TERRA COTTA	8504 SAND	8533 PORT	8626 EUCALYPTUS

PREMIERE COLLECTION

RENAISSANCE NEO

			
9214 STEEL BLUE	9201 COBBLESTONE	9205 GYPSUM	9208 WINEBERRY
			
9203 PYRITE	9207 ICE BLUE	9210 CYPRESS	9212 BLUE JADE

SPRADLING
Recommended Care & Cleaning

Clean within 24 hours to avoid permanent stains in the surface. After this time has elapsed, effectiveness drops to 50%.



We recommend cleaning at least once a week to extend the lifespan of the upholstery, which will prevent dirt and contamination buildup and permanent staining. In the event of a spill, wipe off any excess right away with a dry white cloth or fabric, but careful not to spread to remaining surface.



Clean the whole surface in a circular motion using pH neutral liquid hand soap and water (1 part soap to 9 parts water). Check the Approved Cleaners guide for recommended cleaning products. Wipe with a clean damp cloth to get rid of any excess soap. Repeat as needed and then let dry.



† If there is any buildup that cannot be removed with soapy water, a mixture of alcohol and water (1 part isopropyl alcohol to 9 parts water) can be used as a last resort.

Remember, using alcohol on a regular basis can affect the properties of the product.



Once a month, you can use a soft-bristle brush for a deeper cleaning. Remember, light colors need more care, more often.

† This section of cleaning guide does not apply to Dolce.

Disinfectants

There is a wide variety of available biocides that include bleaches, peroxides and quaternary ammonium products, among others. They should always be used at the recommended dilution, never in concentrated form. To prolong the life of coated fabrics, the disinfectants should be rinsed off after each use.

If you need to disinfect the product because it has come into contact with organic material (blood, urine or fecal matter), check the disinfection guide for appropriate cleaning products. Clean with a clean white cloth or fabric. If you choose to use a bleach solution, only use 0.5% concentration (1 part bleach to 10 parts water). Rinse and wipe with a clean damp cloth to get rid of any excess and dry.


For Color Transfer

Our products don't transfer onto other materials, but some clothing items (like jeans, microfibers and dark fabrics) could transfer their color to the coated fabrics, depending on how they are dry-cleaned. This happens more with dampness and higher temperatures and is irreversible. Neither GF Health Products, Inc. nor Spradling International, Inc.® is responsible for any damages caused in this manner. Please check compatibility when using this product in combination with painted or varnished surfaces.

COLOR VARIATIONS Swatches are digital reproductions. Perceived texture and coloring may vary on finished product. Monitor and printer settings will effect appearance of color.

Fabric Availability Current at time of publication and subject to change without notice. Contact Customer Service for the most current availability. +1 770.368.4700 cs@grahamfield.com




 Cleaning Guides specific for each finish technology. [www.spradling.group]

 Guide to Healthcare Surface Disinfection for the Real World. [www.spradling.group]

Note: This guide has recommendations for properly using and cleaning these products. Users are responsible for using and cleaning the coated fabrics safely with products that don't affect the surface, composition or, as a result, their performance and lifespan. The information in this cleaning guide refers to performance in specific tests conducted under laboratory conditions. Cleaning results may vary depending on the size of the stain, cleaning product used and time the surface is exposed. This information is not a guarantee and does not relieve the user from the responsibility of the proper and safe use of the product and referenced cleaning agents. Neither Spradling International, Inc.® nor GF Health Products, Inc. have a relationship with the manufacturers of any cleaning products.

GF Health Products, Inc. is an ISO 13485:2016 / MDSAP Certified Company

The most current and complete product information can be found on our website. Information contained herein is subject to change without notice.

 Color variations may occur due to monitor or printer settings.

published **April 2025**

Intensa, Inc. | 1810 S. Elm Street | High Point, NC 27260 | USA
+1 336.884.4096 | intensa@grahamfield.com | intensa.net

