

STANDARD CASEGOOD FINISHES

3/4 INCH THERMOFUSED LAMINATE

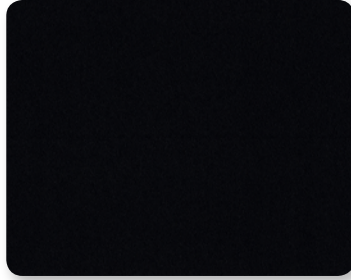


Heavy Duty Matched Edge Band

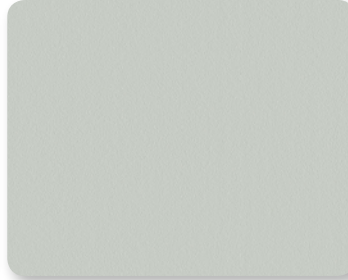
Auroco® Prism



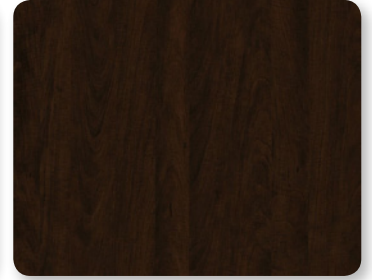
ARA ARIA



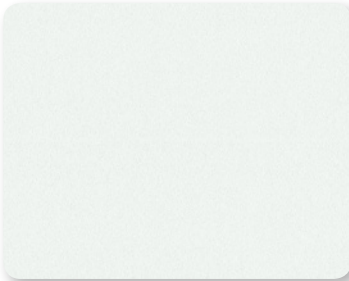
BLK BLACK⁴



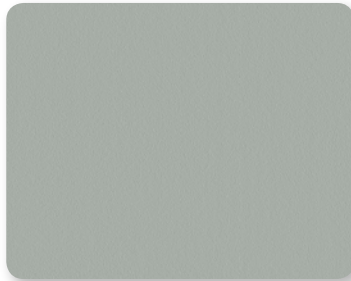
FGY FOLKSTONE GREY⁴



GAN GANACHE



ICE ICICLE⁴



LGY LONDON GREY⁴



NWY NORWAY



TCY TALAS CHERRY

Wilsonart®



SHA SHAKER CHERRY



SOK SOLAR OAK



WCH WILD CHERRY



WMY WINDSOR MAHOGANY



CHO CHARLESTON OAK



WMO WILLIAMSBURG OAK

Color Variations Swatches are digital reproductions. Perceived texture and coloring may vary on finished product. Monitor and printer settings will effect appearance of color.

Non-Standard Finishes will include an upcharge. Contact Customer Service.

Product Availability Current at time of publication and subject to change without notice.
Contact Customer Service for most current availability: +1 336.884.4096 | intensa@grahamfield.com

⁴ matched RAL powdercoat finish available ⁵ acymed antimicrobial



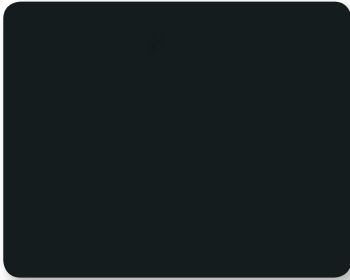
STANDARD COUNTER TOP FINISHES

1 INCH HIGH PRESSURE LAMINATE



Heavy Duty Edge Band

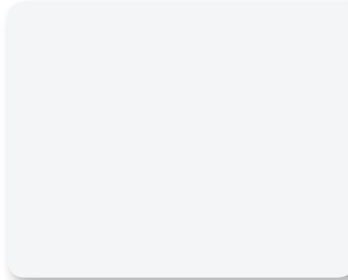
Wilsonart® High Pressure Laminate



1595 BLACK



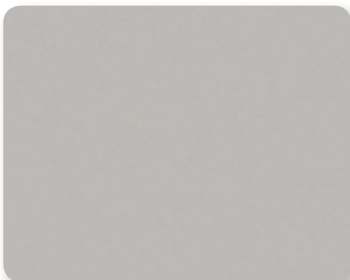
4925 CALCUTTA MARBLE



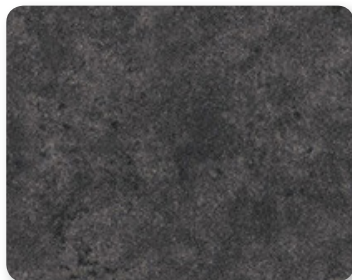
D354 DESIGNER WHITE



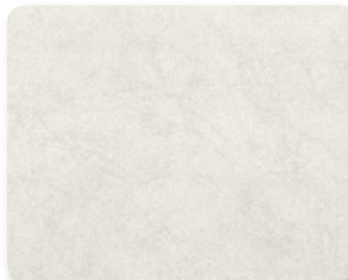
D92 DOVE GREY



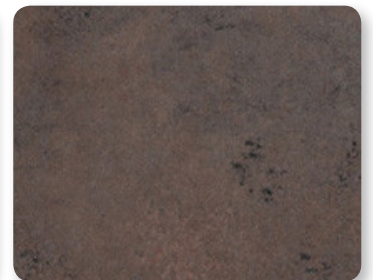
D381 FASHION GREY



4882 OILED SOAPSTONE



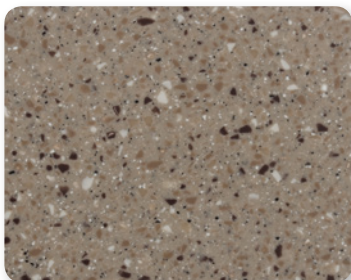
4945 ORGANIC COTTON



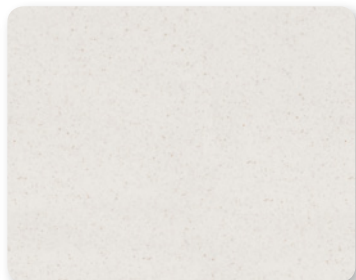
4883 SABLE SOAPSTONE

SOLID SURFACE

Meganite® Solid Surface



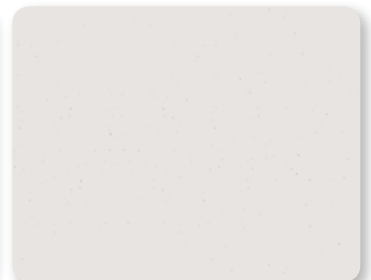
685AR ALLSPICE GRANITE



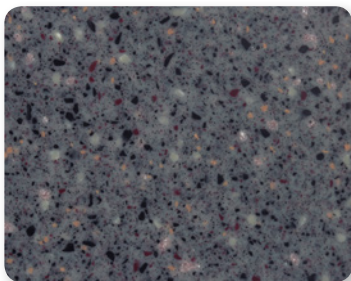
7372 CHAMOMILE PRO⁵



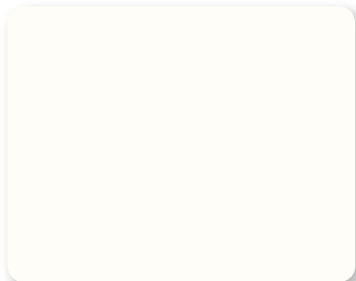
056A GREY



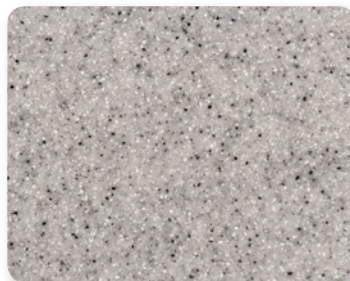
532Z JASMINE PRO⁵



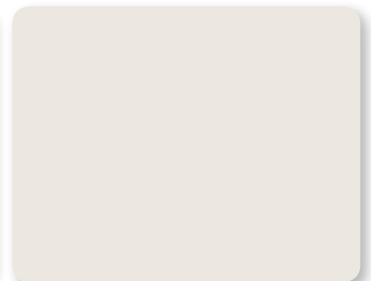
657A LAVA GRANITE



033Z MEDIWHITE⁵



219AR SILVER MIST



005A SOFT WHITE

Color Variations Swatches are digital reproductions. Perceived texture and coloring may vary on finished product. Monitor and printer settings will effect appearance of color.

Product Availability Current at time of publication and subject to change without notice.
Contact Customer Service for most current availability: +1 336.884.4096 | intensa@grahamfield.com

Non-Standard Finishes will include an upcharge. Contact Customer Service.

⁴ matched RAL powdercoat finish available

⁵ acymed antimicrobial



Auroco® Prism TFL Casegoods**Recommended Maintenance and Cleaning Tips⁶**

In order to maintain the life and appearance of your Prism Thermally Fused Laminate (TFL) panels, please follow these guidelines:

Guidelines

- After installing the panels, remove adhesives with paint lacquer thinner or contact adhesive solvent.
Continued use of solvent cleaners is not recommended.
- Thermally fused melamine finished panels may be easily cleaned using a mild, non-abrasive, all-purpose cleaner and a soft cloth.
Coffee, tea or other difficult stains may be removed using a mild household detergent or a paste of baking soda and water (*note: 10-20 strokes should remove most stains, excessive force or scrubbing may damage the surface*)
- Harsh chemicals or abrasive materials should not be used.
Should the surface come in contact with drain, toilet or oven cleaner immediately remove the chemical, rinse thoroughly and wipe dry.
Abrasives such as scouring pads or gritty cleansers may permanently dull and/or scratch the surface and result in future staining.
- Protect the surface from hot or sharp objects.
Do not place hot cookware, dishes or objects onto the surface. Knives and other sharp objects used directly on the surface can also be damaging.
Protect surfaces from heat with an insulating pad or trivet, and from sharp objects with a chopping block or counter protector.
Hot pans and heat-producing appliances (such as electric skillets), when set directly upon counter tops, can mar the product's beauty. Always use a heat shield, hot pad or trivet.

Surface Disinfectant Recommendations⁶

In order to maintain the life and appearance of Prism Thermally Fused Laminate (TFL) panels, please follow the guidelines above.

Below is a list of products that can be occasionally used to disinfect a fully intact TFL surface (free of surface cracks, excessive wear or exposed edges).¹⁰

Please ensure to follow an 'apply and wipe process'. Do not saturate/soak the panel with cleaner/disinfectant. Wipe with a damp soft cloth using fresh water after cleaning to eliminate residue.

Arauco Disinfectant Recommendations⁶

Clorox®/Lysol® Wipes & Spray	• Safe for use as purchased in consumer packaging ⁷
Isopropyl Alcohol	• Recommended 70% concentration: 3 parts Alcohol: 1 part Water • Spray Bottle: Safe to use at Full strength ⁷
Hydrogen Peroxide	• DO NOT use full strength, must be diluted. Recommended dilution: maximum 1%
Clorox® Bleach	• Recommended dilution 1 cup/gallon of Water

Product Recommendations⁶

The cleaning products recommended were used in a laboratory setting. This information is not a guarantee and does not relieve the user from the responsibility of the proper and safe⁷ use of the product and referenced cleaning agents. Cleaning product brands referenced in this document are not associated with the manufacturer of these materials. Rights and conditions are reserved by all respective companies and brands. GF Health Products, Inc. nor Intensa has a relationship with the manufacturer of these materials nor cleaning products.

Color Variations

Swatches are digital reproductions. Perceived texture and coloring may vary on finished product. Monitor or printer settings will effect appearance of color.

Product Availability

Current at time of publication and subject to change without notice.
Contact Customer Service for the most current availability.
+1 336.884.4096 | intensa@grahamfield.com

Wilsonart® Laminates TFL & HPL Casegoods & Counter Tops**Recommended Cleaning Tips⁶**

- To clean the surface, use a damp cloth or sponge and a mild soap or detergent. Rinse thoroughly with warm water and wipe dry.
- Difficult stains such as coffee or tea can be removed using a mild household cleaner/detergent and a soft bristled brush, repeating as necessary.
- If a stain persists, use a paste of baking soda and water and apply with a soft bristled brush. Light scrubbing for 10 to 20 strokes should remove most stains. Although baking soda is a low abrasive, excessive scrubbing or exerting too much force could damage the decorative surface, especially if it has a gloss finish.
- Stubborn stains that resist any of the above cleaning methods may require the use of undiluted household bleach or nail polish remover. Apply the bleach or nail polish remover to the stain and let stand no longer than two minutes. Rinse thoroughly with warm water and wipe dry. This step may be repeated if the stain appears to be going away and the color of the laminate has not been affected.

Warning

- Prolonged exposure of the laminate surface to bleach will cause discoloration. Always rinse laminate surfaces after cleaning! Failure to rinse after cleaning can cause damage; even if a small amount of cleaning solution remains on the surface. A dry residue may be invisible; however, moisture from cups or drinks can reactivate it, and result in permanently etched scars or stains over time.
- Hot pans and heat-producing appliances (such as electric skillets), when set directly upon counter tops, can mar the product's beauty. Always use a heat shield, hot pad or trivet.

A Few Notes of Caution

- Acidic or abrasive cleaners can damage laminate surfaces; do not use them.
- Drain cleaners containing lye will permanently damage the laminate surface. If you spill a drain cleaner, wipe it up immediately and rinse several times with water.
- Hair, textile and food dyes can cause permanent stains. If dye should happen to spill, wipe it up immediately with dish-washing detergent or an all-purpose cleaner.
- Do not work with oven cleaners on an unprotected counter top. Wipe spills away promptly and rinse several times with water.
- Rust removers contain harsh chemicals, which will quickly cause permanent damage. If a spill occurs, wipe off all residue immediately, wash thoroughly with soapy water and rinse several times.
- Steel wool and other abrasive pads will damage the laminate face. Do not use them for cleaning and don't store steel wool pads on your counter top; the metal can rust and leave stains.
- Toilet bowl cleaners contain harsh chemicals that can cause permanent damage. If spills occur, wipe up immediately, wash surface with soapy water and rinse several times.
- Never place pots or dishes directly from the oven or burner on an unprotected laminate surface; such extreme heat can cause cracking or blistering.

Recommended Household Cleaners⁶

Windex® • Glass Plus® • Fantastik® • Mr. Clean® • Formula 409® • Isopropyl Alcohol

Warnings

DO NOT use products that contain the following ingredients:

CHEMICAL INGREDIENT	SYNONYMOUS NAMES
Hydrochloric Acid	• Muriatic Acid • Hydrogen Chloride
Sulfuric Acid	• Oleic Acid • Oil of Vitriol • Oleum
Hydrofluoric Acid	• Rust Remover
Phosphoric Acid	• Rust Remover
Sodium Hydroxide	• Caustic Soda • Caustic Lye • Soda Lye
Pumice (abrasive)	• N/A

Prolonged exposure of the laminate surface to bleach will cause discoloration. Always rinse laminate surfaces after cleaning! Failure to rinse after cleaning can cause damage; even if a small amount of cleaning solution remains on the surface. A dry residue may be invisible; however, moisture from cups or drinks can reactivate it, and result in permanently etched scars or stains over time.

Hot pans and heat-producing appliances (such as electric skillets), when set directly upon counter tops, can mar the product's beauty. Always use a heat shield, hot pad or trivet.



CARE, CLEANING, & MAINTENANCE

MEGANITE®

Meganite® Solid Surface Counter Tops

Meganite® is a homogeneous solid surface with mineral-filled acrylic polymer material that makes maintenance easy. Routine maintenance will give years of carefree service.

Routine Cleaning of Counter Tops and Sinks⁶

The Meganite sanitary properties do not allow food, dirt, bacteria and germs to penetrate it. Routine cleaning with soap and water and a sponge, or window cleaner and paper towels will remove most dirt and stains.

NOTE: Darker colors tend to require more maintenance than lighter colors.

For Stubborn Stains⁶

Removal Procedures will depend on the finish of the surface.

- **Matte or Satin Finish:** Rub the stain with a scouring cleanser and a Burgundy or Green Scotch-Brite® pad⁸ with water. Always rub in a circular motion, then rinse and towel dry. Rub the entire surface occasionally with the Scotch-Brite pad to maintain the finish.
- **Semi-Gloss Finish:** Use a Non-abrasive cleanser with diluted bleach and a White Scotch-Brite pad⁸. Rub in a circular motion. Rinse and towel dry. A non-abrasive polish like Hopes Polish, available at most home stores, may be used to enhance the shine.
- **High-Gloss Finish:** Follow the procedure for semi-gloss surfaces, but use a sponge instead of a Scotch-Brite pad. If the area is dull in contrast with the surrounding surface, use a white polishing compound with a sponge to get a higher gloss.

Disinfecting Surfaces & Sinks⁶

Wipe sinks and bowls with diluted household bleach to disinfect.

1 part Water : 1 part Bleach

Removing Cuts & Scratches⁶

Removal Procedures will depend on the finish of the surface.

All sanding and polishing should be done in a circular motion.

- **Matte or Satin Finish:** Sand with 180-grit (120 micron) or 220-grit (60 micron) fine sandpaper until the cut or scratch is removed; restore finish with an abrasive cleanser and a Burgundy Scotch-Brite pad⁸ to the same finish as the adjacent surface.
- **Semi-Gloss Finish:** Sand with 400-grit (30 micron) sandpaper; restore finish with a nonabrasive cleanser and a White Scotch-Brite pad⁸.
- **High-Gloss Finish:** and with 400-grit (30 micron) or 600-grit (20 micron) sandpaper; buff with a white polishing compound and a low speed (1500 - 2000 rpm) polisher equipped with a wool pad; finish with a wax.

Preventing Damage⁶

Although easily repaired, use the following guidelines to prevent damage

- **Hot Pans and Objects:** As with other solid surface materials, Meganite should be protected from hot pans directly from the stove or oven by the use of hot pads or trivets equipped with rubber-tipped feet.
- **Stove:** Always place a flame-resistant hot pad or trivet underneath a heat-generating appliance such as a crock-pot or electric frying pan.
- **Chemical Protection:** Some strong chemicals can cause damage to your Meganite surface if left in contact very long. Paint removers, oven cleaners, solvents containing methylene chloride or acetone (nail polish remover), acid drain cleaners, toilet bowl cleaners, contact adhesive solvent, rust removers, or lacquer thinners should be flushed with soapy water as quickly as possible, rinsed with clean water and towel dried.
- **Hot Water and Sink:** Run cold water when pouring boiling water into sinks and allow hot grease to cool slightly before pouring onto sink or disposal.
- **Cutting on Meganite:** Do not cut directly on surface, always use a cutting board.

Product Recommendations⁶

The cleaning products recommended were used in a laboratory setting. This information is not a guarantee and does not relieve the user from the responsibility of the proper and safe⁷ use of the product and referenced cleaning agents. Cleaning product brands referenced in this document are not associated with the manufacturer of these materials. Rights and conditions are reserved by all respective companies and brands. GF Health Products, Inc. has no relationship with the manufacturer of these materials nor cleaning products.

Color Variations

Swatches are digital reproductions. Perceived texture and coloring may vary on finished product. Monitor or printer settings will effect appearance of color.

Product Availability

Current at time of publication and subject to change without notice.

Contact Customer Service for the most current availability.

+1 336.884.4096 | intensa@grahamfield.com

Healthcare Disinfectant Effects

Meganite Acrylic Solid Surface delivers design flexibility, qualified performance, easy fabrication and maintenance, durability for healthcare industry. The installation includes but not limited to nurses' stations, patient rooms, operating room walls, scrub station and shower room... etc.

Environmental Surface Disinfectant⁶

Environmental surface disinfectants should be used according to the manufacturer's recommended dilution instructions for general disinfection. Prolonged exposure to concentrated, undiluted disinfectant solutions can dull or etch solid surface materials, potentially requiring refinishing to restore them. Spills should be cleaned promptly, and disinfectants—especially alcohol-based ones—must be allowed to fully dry before placing objects on the surface. If the liquid does not evaporate completely, it could damage the surface. Repeated use of disinfectants containing quaternary ammonium compounds may leave a hazy residue, which can be removed with hot, soapy water.

DISINFECTANT	EFFECTS ON SURFACE	MAINTENANCE PROCEDURE ⁶
Ortho-Phthalaldehyde	No Effect	None Required
Glutaraldehyde	No Effect	None Required
Glutaraldehyde and Phenol	No Effect	None Required
Peracetic Acid	No Effect	None Required
Hydrogen Peroxide	No Effect	None Required
Hydrogen Peroxide and Peracetic Acid	No Effect	None Required
Phenol	No Effect	None Required
Hypochlorite (Bleach)	No Effect	None Required
Accelerated Hydrogen Peroxide	No Effect	None Required
Alcohol (Ethyl, Isopropyl)	Moderate Deglossing	Removed with Scotch-Brite pad ⁸ and Bleaching and/or Abrasive Cleanser
Quaternary Ammonium Compounds	No Effect	None Required
Alcohol (Ethyl, Isopropyl) and Quaternary Ammonium Compounds	Moderate Deglossing and Surface Etching	Removed with Scotch-Brite pad ⁸ and Bleaching and/or Abrasive Cleanser

High Level Disinfectant⁶

High-level disinfectants should be used strictly in accordance with the manufacturer's recommended dilution instructions. Prolonged exposure to concentrated, undiluted high-level disinfectants may cause dullness or etching on solid surface materials, requiring refinishing to restore them to their original condition. Promptly clean up any spills.

DISINFECTANT	EFFECTS ON SOLID SURFACE
Ortho-Phthalaldehyde	No Noticeable Effect
Glutaraldehyde	Removed with Scotch-Brite pad ⁸
Glutaraldehyde and Phenol	Removed with Scotch-Brite pad ⁸
Peracetic Acid	Removed with Scotch-Brite pad ⁸
Hydrogen Peroxide	Removed with Scotch-Brite pad ⁸
Hydrogen Peroxide and Peracetic Acid	Removed with Scotch-Brite pad ⁸ & Bleaching and/or Abrasive Cleanser

⁶ recommendations do not serve as a product guarantee. use all cleaning and disinfecting agents as instructed by the manufacturer

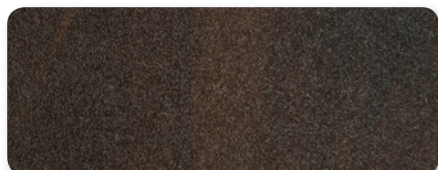
⁷ the term "safe" in this document, pertains only to the effects on the TFL surface and not in reference to human health.

⁸ recommend Scotch-Brite 7447 (maroon) for matte finishes and Scotch-Brite 7448 (gray) for semi-gloss finishes. white and burgundy Scotch-Brite pads are usually available only at hardware stores

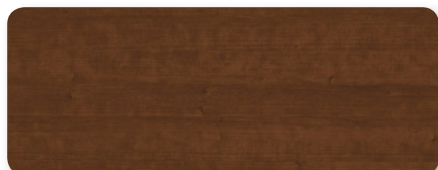


175 OBT Top Finishes [xx]

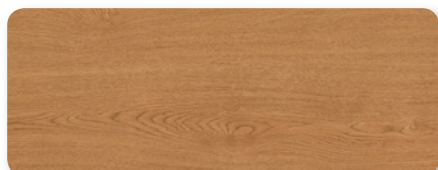
AR ARIA



CO COCOBALA



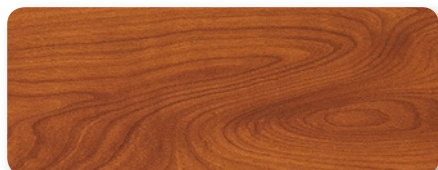
SC SHAKER CHERRY



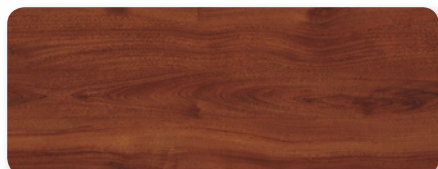
SO SOLAR OAK



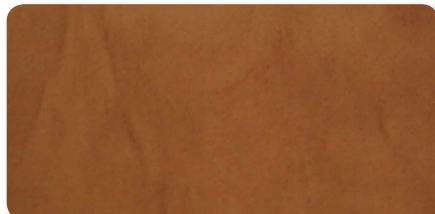
TC TALAS CHERRY



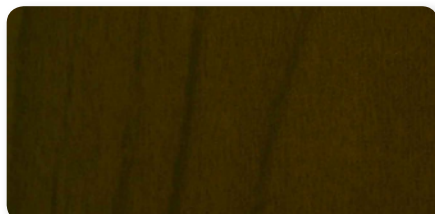
WC WILD CHERRY



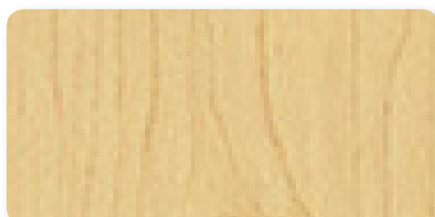
WM WINDSOR MAHOGANY

177-179 OBT Top Finishes [xx]

CL CANDLELIGHT



CP CHOCOLATE PEAR



HM HARD ROCK MAPLE



MO MEDIUM OAK

175**Recommended Care & Cleaning**

See Wilsonart® Laminates on page 3

179 - 177**Recommended Care & Cleaning**^{6,7}**ALWAYS** rinse overbed table with a water-dampened cloth to remove any cleaning agent residue, and dry thoroughly

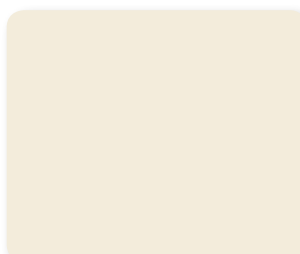
Recommend using a mild cleaning agent or detergent when cleaning overbed table. Some cleaning agents are corrosive by nature, and if not rinsed their residue can cause permanent damage



If other hospital-grade cleaning agents are used, follow the instructions provided by the manufacturer



After cleaning rinse surfaces using a water-dampened cloth, and dry thoroughly as some cleaning agents are corrosive by nature, and if not rinsed their residue can cause permanent damage

Color Variations Swatches are digital reproductions. Perceived texture and coloring may vary on finished product. Monitor and printer settings will affect appearance of color.**Product Availability** Current at time of publication and subject to change without notice.Contact Customer Service for most current availability:
+1 336.884.4096 | intensa@grahamfield.com⁶ recommendations do not serve as a product guarantee, use manufacturer instructions
⁷ the term "safe" herein, pertains to surface effects and not in reference to human health**177-179** OBT Base Colors [y]

A ALMOND



G GRAPHITE GREY



N NEVADA

